

A HEARTY GREETING

TO

SHELBY COUNTY

ON ITS

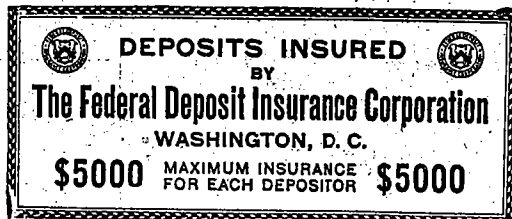
100TH BIRTHDAY

Since the organization of this bank forty-one years ago, the people of our County and the Nation have periodically faced depressions and despondency, and at times it appeared that all accumulated progress was being lost in a few short years, yet history records that these periods of depression have made us a better and stronger people, so during these forty-one years we have had many disheartening set-backs and enjoyed many years of prosperity, and in reviewing the years of experience our happiest recollection is the confidence all along the years, expressed by our patrons and their hearty co-operation with us in both good and bad times, without which no bank could survive, and we have for a long time realized that there should be a sound relationship between the bank and its customers and that the welfare of the customer equals the welfare of the bank.

We believe in the policy that a bank can be conservative and useful to the community and at the same time provide the utmost safety for the funds of its customers, which overshadows all other service that can be rendered by a bank.

We believe our bank is big enough to handle all reasonable demands on a bank and not too big to have a personal contact with its customers, and we assure our patrons that we have enjoyed their patronage and friendship in the past, and if our experience is of value to them in handling problems with which we are better acquainted than they might be, we hope you will not hesitate in consulting us in all matters and services to be rendered by a bank to its patrons.

1893



1935

The Citizens Bank

OFFICERS

E. M. DAMRELL, President J. M. PICKETT, Cashier

BOOKKEEPERS

W. B. Pickett Elbert Turner

DIRECTORS

E. M. Damrell

H. P. Gaines
T. B. Damrell
Thos. Freeman

J. M. Pickett
Roy Cooper
W. C. Hewitt

AN HISTORICAL SKETCH OF BAPTISTS IN SHELBY CO.

(From the Beginning in 1835 to 1935.)
By Adolph Vollmer, Missionary of Bethel Baptist Association.
The writer of this historical sketch of the activities of the Baptists in Shelby county has consulted the History of Shelby County and the Minutes of the



ADOLPH VOLLMER
Missionary of the Bethel Baptist Association, 1935.

Bethel Baptist Association dating from 1835 to the present time, also individual church records and conferences with individual church members of many of the churches. An effort is made to give the facts as nearly as it is possible to give them.

The History of Shelby County states that the first settlers came into what is now known as Tiger Fork township and that the first preachers were William Fuqua, William Hurley and Jeremiah Taylor. These three preachers were Baptist preachers. William Fuqua was pastor of the South River Baptist church, four miles south of Palmyra, William Hurley was pastor at Palmyra and Jeremiah Taylor was pastor at Bethel six miles northwest of Palmyra.

The Bethel Baptist Association was organized in 1834 and inherited a territory that embraced

territory to be divided. The Bethel Association was not indifferent to the spiritual needs of the people who lived in this vast territory. The first Annual Meeting of the Association was held at Providence Baptist Church in September 1835, just east of New Market in Marion county. At that meeting William Carson, a member of the Bethel Church, government land agent at Palmyra, prepared and read the "Circular Letter" to the Association. These words occur, "Look to the west of us and you will find an entire county without a settled minister of any denomination." He had reference to Shelby county. He also urged upon the ministers to "itinerate" and that the churches should support them. Two of the preachers mentioned above, William Fuqua and William Hurley, determined to "itinerate" and came to Shelby county in 1835 and preached in the home of Mrs. Caroline Looney, who lived on section 8, township 58 and range 9, or four miles north and four miles east of where Shelbyville now is.

In this home they organized the Looney's Creek Baptist Church and the church was received into the Bethel Baptist Association in 1836 at Paris, Mo. Here was also erected a log "meeting house" in 1837. Henry Louthan became the pastor. He was opposed to the "Mission System", as he called it, and at the meeting of the association, when a resolution that he introduced, condemning the "Mission System" was voted down by a large majority he demanded a letter of dismission for the Looney's Creek Baptist Church. This was in 1837 and the Association granted his request for dismission. This action divided the church. Those in sympathy with him organized themselves into the Looney's Creek (O. S.) Baptist Church and moved the organization into section 33, township 59 and range 9. This makes its location six miles north and five miles east of Shelbyville. Here a "meeting house" was built in the year 1846. It was built of brick and cost \$1200. It was built on land acquired from Edward Wilson and his wife Mary. It was deeded to A. Wilson, Henry Louthan, James Lear and Thomas G. Turner, trustees. Executed 1846. It now has thirty-four members.

Those who were out of sympathy with Henry Louthan retained the meeting house erected in 1837 and were organized by Jeremiah Taylor and William Hurley in 1838 and called the church Mt. Zion Baptist Church.

The charter members of this church as given by the Shelby County History were: Edward Rutter, Elizabeth Rutter, Levan Brown, Lucinda Brown, Caroline Looney, William Randolph, Lucy Moffett, Jesse Vanskike, Martha Vanskike, Amanda Moore, Edmund Rutter, Jane Rutter, William Moffett, Hannah and Sarah, colored women, making fifteen members. The Shelby County History gives these names as being constituent members of the Looney's Creek (O. S.) Baptist Church as follows: Wm. Ran-

dolph, Nancy Randolph, Henry Louthan, Mary Louthan, Manly Elgin, Evaline Elgin, William Moffett, Edward Wilson, Mary Wilson, Edmund Rutter, Elizabeth Rutter, making eleven members.

The reader will notice that the names of William Randolph, William Moffett, Edmund Rutter and Elizabeth Rutter appear in both lists.

The minutes of the Bethel Baptist Association for 1833 give the names of William Randolph, William Moffett and E. Rutter as messengers from the Mt. Zion Church. The reader will have to determine to which of these two churches they belonged.

Mt. Zion had as her first pastor in 1838, Christy Gentry, and continued to worship in the log "meeting house" built in 1837,



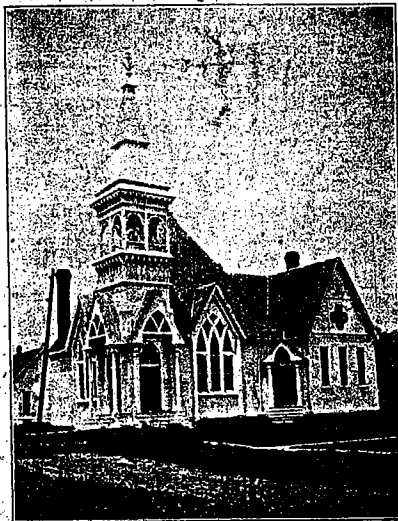
CHRISTY GENTRY
The first pastor of the Mt. Zion Church, 1838.

until 1859 when Nathan Ayres, the missionary of the Bethel Baptist Association, went there and started a movement to build a new church house. This house was built on section 6, township 58 and range 9. The land was acquired from William C. Looney and his wife, Mariah, and deeded to Augustine J. Smith and Benjamin F. Foreman, trustees of the Mt. Zion Baptist Church. The deed was executed in 1859.

The building erected is valued at \$2,000 and is four miles north and four miles east of Shelbyville.

The membership is now 30 and

SHELBYVILLE BAPTIST CHURCH



the church conducts a Sunday school. The present pastor is W. W. Webb.

The church gave James Francis Smith to the ministry who was a power in the pulpit, who held several positions of grave responsibility for Missouri Baptists and did valiant work as missionary in the Bethel Association for several years.

The Shelbyville Baptist Church The minutes of the Bethel Baptist Association state that this church was organized in 1841 by Anderson Woods who was pastor at Paris, Mo., and perhaps Benjamin Stevens or J. H. Keach, the rest of the statement in the minutes being destroyed. The church was not received into the Bethel Association however until 1843, when it was represented by W. H. Vanort. The pastor was J. H. Keach and the church had twelve members.

The messengers to the association for 1844 were: A. G. Smith, C. Dickinson, T. Victor and W. H. Vanort; for 1845 they were T. Victor, A. G. Smith, N. McBride and W. H. Vanort. This year the church had twenty-one members, and Norman Parks was the pastor.

The church now has 166 members, conducts a Sunday school, has a B. Y. P. U. and a W. M. U. The church property is valued at \$10,000.

The North River Baptist Church This church was organized by



J. H. KEACH
The first pastor of the Shelbyville Church, 1841.

James Francis Smith, missionary of the Bethel Baptist Association, with twelve members in the year 1844. The church was received into the Bethel Association in 1844 and the messengers were A. Gillispay and J. Garnett. James Francis Smith was the first pastor. This church is located two miles east and two miles north of Leonard. It is now dormant, except for having a Sunday school. The property value is \$1,200.

The Black Creek Baptist Church

This church was organized in the Eaton school house and worshipped here for years, but reported to the Bethel Association in 1858 that it had built a comfortable house of worship.

The church was organized by James Francis Smith, missionary of the Association. It reported twelve members but no pastor in 1843, but in 1849 it had Robert Kaylor for pastor. It was organized in 1848 and in the same year was received into the Bethel Association, having as messengers A. C. Smith, C. D. Dickerson and G. E. Bell.

The church was located two miles east and three miles south of Shelbyville. It is now extinct.

This church gave Harry, George and John (Jack) Eaton to the ministry. John (Jack) Eaton was missionary of the association several times and constituted several Baptist churches in the county.

The Hunnewell Baptist Church

There have been two Hunnewell churches. This one was organized in the Sherry school house by Nathan Ayres, missionary of the Bethel Association. It was organized with seven consti-

uent members. It was organized in 1859 and was received into the Association the same year, being represented by J. McGlothlin, J. T. Davis, C. R. Mays and J. M. Polard. The first pastor was Milford Powers. The Sherry school house was three miles north of Hunnewell. It disbanded in 1875, some of the members becoming charter members of the Prairie View Baptist Church.

The Shelbina Baptist Church. This church was organized by Milford Powers, assisted by Henson Thomas, in 1860 with eleven charter members. It united with the Bethel Baptist Association in 1860, reporting seventeen members and Henson Thomas the pastor. It was represented by T. R. Thomas, J. W. Veal and William Thomas. The first house of worship was a union house which

(Continued on page 3 Section B)

HEINTZ'S

Shoes For Entire Family

QUINCY, ILL.

EMPHASIZING!

THE VALUE OF FORESIGHT IN RELATION TO PROGRESS—YET OUR GOAL IS NEVER REACHED

It has often been pointed out that the utility services of a community are so close to the people that without them the city would stagnate and become a sleepy hollow. Utility services form the backbone of stability in advancement and expansion. These services touch, intimately, the life of every individual several times daily. The potentialities of every city are judged by the adequacy of its utility services such as light and power, telephones, railroads, and other transportation facilities.

It isn't hard, when business is good, to build a reputation for keeping faith with the people. Anyone can live in a house of brick when bricks are not expensive. But the temptation to let-down "temporarily" under stress is a big one—even tho that is the time the people need adequate service and encouragement most.

Years ago electric current, supplied by this company, was from small generators that would hardly supply the demand of one town in Shelby county. The old direct current arc lights sputtered on the street corners. Few homes were supplied with electric lights and none with labor saving devices and appliances.

We have kept faith with our communities in Shelby county through its "Ups" and "Downs". We have modernized our electric plant with entirely new equipment during the last decade which enabled us to lower the rates. We have continually visualized the future—many years hence—in providing adequate utility service for every purpose.

The electric industry has, probably, made the most outstanding progress among the nation's industries. We have conscientiously endeavored to keep abreast of the times and NOW we have reason today, more than ever before, to fill the important place which has been carved for us in the economic life of Shelby county.

Our years of activity in Shelby county, shoulder to shoulder with all industries is an inventory of progress—a reminder that progress is incessant; an inspiration to carry on. And as we face forward again we see OPPORTUNITY and CONFIDENCE as our guide beckoning us to follow to even greater achievement. It's a challenge to knowledge, to vision, to ingenuity.

SEE OUR ELECTRICAL APPLIANCES ON DISPLAY DURING THE CENTENNIAL CELEBRATION, AUGUST 1, 2, 3, 4, 1935.



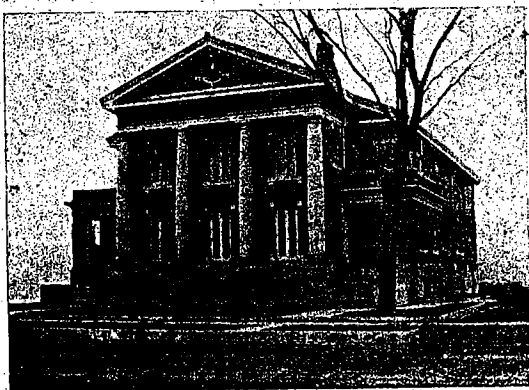
SHELBYVILLE H. S. GRADUATING CLASS



(Left to right) Bottom row—Aileen Duncan, Bob Woods, Gladys Harrison, Milton Hubbard and Nadean Smoot. Second row—Claude Collier, Margaret Howerton, Standley Turner, Maurine Fney, Dorian Alexander, Mabel Feely, Elbert Turner and Marie Perrigo.

Third row—Spencer Yancey (class sponsor), Leslie Green, Erma Lee Schnauffer, Ronald Wilson, LaVaughn Sayre, Fred Drennan, Myrnell Brace and Darrell Wilson.

Back row—Edna Mae Johns, Wilford Peacher, Fenella Brace, Harold Latimer, Eleanor Fox, Bud Glover, Mildred Dimmitt and Hallis Garnett.



SHELBINA BAPTIST CHURCH

AN HISTORICAL SKETCH OF BAPTISTS IN SHELBY CO.

(Continued from page 2, Sec. B)

was used by both Baptists and Methodists. It was known as the B. and M. church house. In 1881 the church erected a brick building at the cost of \$5,000. In 1918 it dedicated a new building costing \$21,000. It also has a parsonage, the total church property value is \$31,000. It gave Frank Connely to China as a missionary, Mrs. A. C. McChesney (Miss Fanny Cadwell), to home mission work and Harry Spurgeon to the ministry. The church now has 330 members, carries on Sunday school, B. Y. P. U. and W. M. U. work.

The Oakridge Baptist Church
This church was organized with nineteen charter members in 1867 by Milford Powers, missionary of the Bethel Association, and John (Jack) Eaton. It was organized in the Oakridge school house and in 1882 built the church house it now occupies, valued at \$2,500. It united with the Bethel Association the same year it was organized and was represented by H. Kidwell, W. Kidwell, J. Smith and E. Dungan. There are now 95 members. There is also a Sunday school and a Woman's Missionary Society.

George Barton, Ed. Barton, R. L. Webdel and Robert Carroll were given to the ministry by this church.

It is five miles west and two miles south of Shelbina.

The Shiloh Baptist Church
C. S. Taylor and John (Jack) Eaton, missionaries of the Bethel Baptist Association, organized this church in 1869 with twenty-five charter members. It united with the Association in 1869 and was represented by J. W. Cochran, R. A. Todd, J. H. Vansike and C. L. Elgin. The first pastor was D. V. Inlow.

It has a church house valued at \$1,200 and is located eight miles north and two miles east of Shelbyville. The present pastor is F. L. White. The membership numbers fifty-seven and it has a Sunday school.

The Oakdale Baptist Church
This church was organized through the efforts of D. V. Inlow and John (Jack) Eaton in 1871 with twenty-six members. In that same year it united with the Bethel Baptist Association and had, as messengers, William R. Crane, J. J. Bell and Thomas Turner. The first pastor was D. V. Inlow. Philip Ruth was also a member of this church. The church never built a church house and dissolved in 1876 to help in the organization of the Prairie View Baptist Church.

Walkersville Baptist Church
This church was organized with twenty-one charter members by Henson Thomas, John (Jack) Eaton and George W. Robey. The church united with the Bethel Baptist Association in 1871, the year it was organized. The messengers to the Association were George Kendall, M. E. Rutter, T. H. Hardcastle and N. H. Cadwell. The first pastor was George W. Robey who was also pastor of the Shelbina Church at the same time.

This church gave the following to the gospel ministry: L. S. Hale, C. L. Wilkins, G. L. Hale and L. M. Hale.

At the present time the church is dormant. The church property is valued at \$1,200. It is two miles north and three miles west of Shelbina.

The Friendship Baptist Church
The church was organized at Kendall in 1873 with twenty-one members and was perhaps constituted by John (Jack) Eaton

who was the first pastor of the church. The church did not build a church house. It consolidated with the Oakdale Church and the first Hunnewell Church to form the Prairie View Church in 1876.

The Union Grove Baptist Church
This church was organized in 1874 with twenty-five or twenty-seven charter members. It was organized by J. G. Swinney who also was the first pastor. It worshipped in the church building erected for the use of the Baptist, Methodist Episcopal, and Christian denominations and is five miles south of Clarence.

When the church was organized it united with the Macon Association. The church is now extinct. The last pastor was G. A. Mitchell in 1921 and the messengers to the Association that year were H. L. Troup and wife and Charles Trussell and wife.

The Prairie View Baptist Church
This church was a consolidation of the first Hunnewell, Oakdale and Friendship Churches. This consolidation was effected by J. B. English, missionary to the Bethel Baptist Association, and the church united with that Association. The church was constituted in 1876 with sixty-eight charter members. The first pastor was James S. Green. The church house is located five miles north and one mile west of Hunnewell and is valued at \$3,000. The present pastor is Roscoe M. Munday. The membership numbers seventy-four and conducts a Sunday school and also has a Woman's Missionary Society.

The Clarence Baptist Church
The church was organized in 1877 by J. S. Dingle, missionary of the Bethel Baptist Association. It united with the Macon Baptist Association the same year. It was organized with fifteen charter members. The first pastor was Sanford Smith. The present pastor is Forrest B. Smith. The membership is eighty and worships in a house valued at \$3,000. The church has a Sunday school, B. Y. P. U. and a Woman's Missionary Society.

Harmony Grove Baptist Church
This church was organized by Sanford Smith with eighteen charter members in 1885. The first pastor was John (Jack) Eaton. The church united with the Mt. Salem Baptist Association the year it was organized. There is no pastor at present and no Sunday school. The church house is valued at \$1,500.

The Mt. Pisgah Baptist Church
This church was organized in the Applegate School House with eighteen charter members in 1886 and united with the Mt. Salem Baptist Association the year it was organized. It was organized by O. N. Collins who was also the first pastor. The present pastor is W. W. Webb and the present membership of the church is seventy-eight. The church conducts a Sunday school.

The church house was erected in 1892 and is valued at \$1,200, and is located seven miles north and four miles west of Shelbyville.

The Emden Baptist Church
This church was organized by H. B. N. Gardener, missionary of the Bethel Baptist Association, in 1893 with forty-three charter members. The first pastor was J. A. Day. The present pastor is Cecil Logan. The church conducts a Sunday school and has a church house valued at \$2,600. The membership is now 123.

West Bethany Baptist Church
This church was organized in 1893 with five charter members. It was organized by L. K. Obenchain, J. G. Swinney and J. M. Swinney. L. K. Obenchain was the first pastor. The church

united with the Bethel Baptist Association. A church house valued at \$1,000 is located five miles north and one mile west of Clarence. The church is now extinct. The last pastor was G. A. Mitchell in 1919. The church property was deeded to the Executive Board of the Bethel Baptist Association.

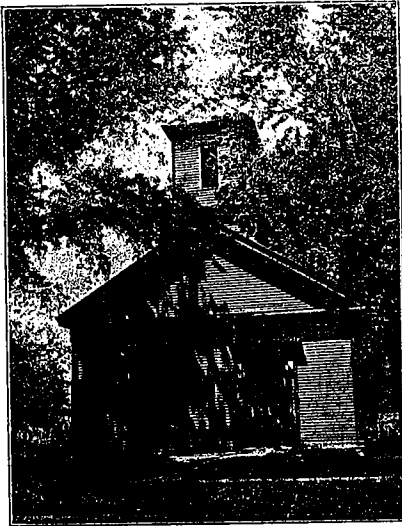
The Hunnewell Baptist Church
This church was organized in the town of Hunnewell in 1893 by Howard Lee Jones, a missionary of the Bethel Baptist Association. It was organized with thirteen charter members. The first pastor was W. H. Foley, the present pastor is I. G. Atterberry and the membership is fifty-one. The church conducts a Sunday school, has a Woman's Aid Society. The church house is valued at \$1,400.

The Bethel Baptist Church
This church was organized by L. P. Smith in 1912 with twenty-three charter members. It was organized in the Christian Church, then the congregation worshipped in the new bank building, hall and erected a church house valued at \$3,500. The church united with the Mt. Salem Baptist Association. The first pastor was L. P. Smith; the present pastor is Gordon White-side. The church now has forty-six members. It also conducts a Sunday school.

Recapitulation
The total Baptist churches, organized in Shelby County in the one hundred years is twenty-one. One of these churches, Looney's Creek, became an "Old School" Baptist church. North River, Harmony Grove and Walkersville are dormant. Black Creek, Union Grove and West Bethany have disbanded. The First Hunnewell, Oakdale and Friendship consolidated to form the Prairie View Church. The remaining churches are Mt. Zion, Shelbyville, Shelbina, Oakridge, Shiloh, Prairie View, Clarence, Mt. Pisgah, Hunnewell, Emden and Bethel. These eleven churches have a membership of 1,126, a Sunday school enrollment of 902, members received in 1934 were 111. These churches contributed for local expenses \$4,995.30 and for missions, education and benevolences \$1,346.70. They have a church property valued at \$59,500.

THE EARLY M. E. CHURCH

The Shelbyville Methodist Episcopal Church as it appeared about twenty years ago. The same building is in use today by the Fuller & Pope Garage.



Be Pleased With Yourself at the Centennial

A Visit Here Assures You of the Finest in Beauty Culture

Sepha's Beauty Shop Phone 90 Shelbyville, Mo.

CHRISTIAN CHURCHES OF SHELBY COUNTY

By Rev. J. L. Shoemaker and Rev. F. M. Branic

Probably the first Christian preacher to enter this section of the country and especially Shelby County, was the Rev. Jacob Creath.

He held a meeting somewhere on Black Creek and formed an organization in the year 1839. The Shelbyville church was formed the same year with the following charter members: Wm. Gooch, Wm. S. Chinn, Joseph Chick, Hiram Rockwood, Warren Hall, Wm. Connor and their wives and families and Mrs. Zereida Hill. The congregation was reorganized in 1874 with the following members: Catherine B. Collier, Jane E. Black, Eliza J. West, Sallie Oaks, Sarah J. Hiter, Sarah Carley, E. Black, Jane Brawner, Lucy S. Chinn, J. M. Collier, Maria L. Sullivan and Cornelia P. Dobyns.

The first church building was erected in 1844 or 1845. It was of brick construction and cost about \$1800. It stood on lot 3, block 15, Jackson Street on the west side of the square in Shelbyville.

It was torn down in the fall of 1865 and another building was erected in which both the Baptist and Christian congregations worshipped.

The first minister was Jacob Creath and he was followed by W. H. Hobson. Under the latter organization the following ministers served:

J. N. Wright, E. C. Browning, H. Northcott and J. T. Welch. During this early time the congregation was composed of about seventy-five members and held preaching services one Sunday in each month and with communion each Lord's day. W. R. Holloway was superintendent of the Bible school which numbered about 45. The next organizations to be perfected were those at Shelbina and Antioch church near Leonard (which later became Leonard Christian church.) This church was organized in Taylor Township in 1867. Some of the charter members were T. P. Manuel and wife, Mrs. Rebecca Peoples, J. P. Tandy, Mrs. C. G. Magruder, George A. Stuart

J. D. Gray and wife, John A. Gilhappy and wife, Joseph Stuart and wife, Mrs. A. S. Magruder and J. T. Barker. There were about fifty members and the first minister was J. P. Tandy. Other ministers of this early period were E. C. Browning, S. A. Vandiver and J. T. Welch. The church building that now stands at Leonard was erected in 1884 at a cost of approximately \$2000. It was dedicated May

11, 1884. T. P. Manuel was superintendent of the Bible school at this time.

The church at Shelbina was organized in the year 1866 or 1867 by Elder T. M. Allen of Columbia, Mo. There had been preaching in and around Shelbina previous to this time. The deed for the First Christian Church was recorded in 1868 and in 1884 at a cost of approximately \$2000. It was dedicated May

H. Fox, Thomas Mitchell, and D. H. Givens. Three hundred and fifty dollars was paid for the lot which was purchased of C. H. True. The building was finished and dedicated in 1870. The first pastor was Wm. Featherston, who held a meeting in the Miller Hall before the church was completed.

The church at Hagers Grove was organized in the early sev-

(Continued to page 6, Sec. B)

For a Third of a Century . . .

The Henderson Produce Co.

has been serving the people of

SHELBY COUNTY

NOW . . .

We Congratulate You on This, Your 100th Anniversary!

Our produce business has grown through these many years of operation in Shelby and adjoining counties. We are proud of the confidence the people of this community have expressed in us.

We know that the ever increasing favors you give us, mean that our efforts to deal with you fairly and efficiently have not been in vain.

As For The Future . . .

We look forward to a future of continued pleasant relationships with you, and pledge our efforts to the goal of serving you better as the years go by.

Henderson Produce Co.

Shelbyville, Mo. Bethel, Mo.

Clarence, Mo. Shelbina, Mo.

HISTORY OF METHODIST CHURCHES OF SHELBY CO

(History and Organization of the Methodist Episcopal Church, South, in Shelby County, Missouri, Compiled by Rev. J. M. Bone.)

Along with the earliest settlers of Shelby county, came the preacher to minister to the people in holy things, and to conduct regular preaching services. "Preachin' day" was the event of the month, and on that day men with their families attended this

time. In 1838, services were held in a big cabin, known as Bacon's Cabin, where the first Sunday school was organized, with Judge P. B. Moore as the first superintendent. This cabin was built by Stanford Drain, as a residence for Geo. Bacon, who, for some reason never moved into it, and it was used as a meeting house. The charter members of this class were: J. B. and Charlotte Lewis, Chas. and Dollie Christine, Mary T. Wallis, Margaret A. Moore, P. B. Moore, Mason Wheeler, David

family, Mrs. Crawford, Jno. Laws and family, Jacob Vandiver and family, Cyrus VanNort and family. A frame church building was erected on the present site during the pastorate of W. W. McMurry, in 1870, and dedicated in the fall by J. H. Pritchett. The present church building was erected in 1896, during the pastorate of O. B. Holliday, at a cost of \$7500. The following have served this charge as pastors: R. N. T. Holliday, W. W. McMurry, B. H. Spencer, L. Rush, T. H. Johnson.

pastor is Wm. Rutherford, who is serving the charge for his third year. Among other pastors who have served this church have been A. P. Linn, W. A. Tarwater, L. Rush, D. C. Blackwell, Rev. Babcock, Walter Tool, J. S. Todd, Wm. Warren, D. R. Shackelford, Wm. Wood, Wm. Wainwright, J. W. Jordan, Dr. J. T. Kinsey, John Holland, C. T. McAnally, W. O. Medley, J. W. Kimbrell, L. C. Maggart, Ward M. Baker, Robert McIlvoy, W. O. G. Potter, H. H. Johnson.

In 1870 there were twelve preaching appointments on the Shelbyville charge: Shelbyville, Bacon Chapel, Oak Dale and Shelby, all Sabbath appointments, and Hardy's, Garrison's, Vandiver's, Hager's Grove, Clarence, Walkersville, and Weedon's S. H. were week-day appointments. W. W. McMurry was serving his fourth year on the charge. A flame of revival swept over the charge during his ministry, and this year there were more than 100 conversions and accessions to the charge and church. A meeting of a few days and of great power and far-reaching results was held at Hagers Grove in 1866. Morris Chapel was one of the results of this great meeting. One Lacy Morris, an early settler in the Bacon Chapel neighborhood, had settled near Hagers Grove in 1864. He would ride to and from Bacon Chapel for religious services. Following this great meeting at Hagers Grove, a class was organized and arrangements were made to purchase the school house, which was to be sold, for a place of worship. Along with three other church buildings projected, Bacon Chapel, Oak Dale and Shelbyville, this enterprise was launched, the school house was purchased and moved at once to a lot deeded to the church by Lacy Morris, located one half mile east of Hagers Grove, and was remodeled for a church building at a cost of \$350, in cash, besides donated work. Logs were donated and the owners of the saw mill sawed the lumber for half, and Wm. Hirrlinger, a carpenter, not a member of the church at this time, did the carpenter work, and donated his work. He afterwards became a member of this class. The first services were held in this house the second Sunday in February, 1866, and the W. A. Tarwater, J. W. Jordan, Geo. Warren, W. A. Hanna, A. Culbertson, Robert White, J. A. Snarr, T. H. B. Anderson, I. T. Nash, Carol Lanjus, W. P. Wynn, J. N. Boyd, J. R. A. Vaughn, J. M. O'Brien, J. A. Wailes.

The Clarence church was re-organized through the efforts of small for the congregation. On Rev. L. Rush in 1867, the names of W. O. Huston and wife, Geo. Hall and wife, Mrs. Webb, Mrs. Whitby, Alice Burkholder, C. Hornback and wife, Mary Hodge and Mrs. Mary Jacobs appearing on the records as the constituent members. From this small beginning the membership has grown to about 400. A frame church building, 36x54 feet in dimensions, was erected about 1876, at a cost of \$1900. It was dedicated by Rev. W. A. Tarwater. This building was erected during the pastorate of W. M. Wainwright. Later this church was altered and repaired during the pastorate of R. M. Dameron. The first preacher to hold services in the town was D. C. Blackwell.

The first pastor assigned to the charge after its organization was L. Rush. The present splendid and beautiful brick structure was erected during the pastorate of H. H. Johnson in 1909, at a cost of \$16,500. Members of the building committee were: H. J. Simons, A. R. Tucker, E. E. Casler, and O. C. Perry. The present

ing services. (This information was given to Rev. W. W. McMurry by Cyrus A. Saunders.) Regular preaching services have been held at what is now known as Oak Dale, from that time until the present. Rev. Wm. O. Cross settled in this community, and on the site of the Judge Geo. J. Parker home. Camp meetings were held near this home. It was called the "Hickory Grove Camp Ground." Thos. J. Bounds also settled here just a little later. The Oak Dale class was organized in 1836. A circuit was arranged connecting with the southeastern part of the county. In the fall of 1837 there was neither church house nor school house in the county. During this season the Methodists held a camp meeting near Oak Dale. Some years later a church building was planned, but after some of the timbers were sawed for the building, for some reason the project was abandoned, and the timbers were used by one of the members in building a residence. However, preaching was continued for years in the grove, in private residences, and in a school house, which was later built. In 1870, during the pastorate of W. W. McMurry, a new church house was built at a cost of \$2000. Geo. J. Parker, Solomon Evans, and Rankin W. Douglass were the building committee. Jas. Gooch deserves special mention for his noble Christian spirit and co-operation in the good work. He gave the land for the church and the cemetery, and the rock in the quarry for the foundation, and lime to plaster, and he worked upon the foundation. Mr. Joseph Bowles gave the timber for the frame of the building. Many others gave labor, and what seemed an impossibility, was a success. During the pastorates of W. M. Wood and Thompson Penn there were gracious revivals. This church was dedicated by Brother McMurry while he was P. E. of Hannibal District. The present church house was erected during the pastorate of G. B. Smith at a cost of \$3600. This is the oldest Methodist class in the county and will soon celebrate its centennial anniversary. It is now a part of the Hunnewell Circuit, and the present pastor is M. R. Lark.

The Bacon Chapel class was organized at the home of J. B. Lewis in the fall of 1837, where services were held for a long

class leaders have been Jas. Dins, Jno. Wailes, Lacy Morris, W. K. Gunby, C. J. Collins, and the present leader is N. R. Taylor. This is one church that has maintained the class meeting through the years. Those who have served as Sunday school superintendents are J. W. Wailes, J. S. Gurdane, E. J. Edmonds, N. R. Taylor, J. W. Minick, Lewis Carroll, and J. B. Sparks. Ministers who have served this church are, Wm. Pryor, Conley Smith, T. Ashby, Tyson Dines, M. L. Eads, Jas. M. Green, P. M. Pinkard, Jacob Sigler, Jas. Wainwright, J. B. Calloway, Geo. Smith, J. B. Baker, M. Birch, L. Newman, Jas. Light, E. K. Miller, W. M. Rush, Jas. Monroe, Jos. Dines, E. Hudson, T. DeMoss, L. Rush, W. W. McMurry, B. H. Spencer, T. H. Swearingen, C. F. Wimberly, T. A. Allison, A. C. Browning, M. L. Shenwell, H. W. Buckner, A. W. Darter, D. L. Sayers. The present pastor is L. C. Maggart. Duncan Chapel, Morris Chapel, Lowman Chapel and Wesley Chapel grew out of this class. J. A. Wailes, W. B. Wheeler, T. S. Wheeler and L. W. Gunby entered the ministry from this church. This is a great old historic church and has been the scene of many great revivals of religion. The present church was dedicated by Rev. Jno. D. Vincil. Within two years this class shall be privileged to celebrate its centenary anniversary.

The first Methodist class organized in Shelbyville was in 1839. The first church building erected in Shelbyville was built by the Methodists in about 1840. This was a brick church, located in the northwest part of town. Removing from this location, the class went to worship in the Shelbyville Seminary chapel, about 1858, which was located in the southwest part of town. After the division of the Methodist church in 1844, and the organization of the M. E. Church, South, the Methodist Episcopal Church had no organization in the county until 1850, most of the membership adhering to the Southern branch of the church. The charter members of this class were: Thos. J. Bounds and family, Cyrus Saunders and family, Dr. Thos. Irwin and family, Jas. Irwin, Wm. Broughton and family, Mrs. Edmonds, Mrs. Vandiver, Wm. Dines and family, Tyson Dines, Jno. W. Dines, Thos. Dines, Joseph Dines, Jas. Ralph and

Hud. McMurry, L. Rush, R. N. T. Holliday, B. H. Spencer, D. R. Shackelford, S. L. Wood, W. A. Tarwater, J. W. Jordan, Geo. Warren, W. A. Hanna, A. Culbertson, Robert White, J. A. Snarr, T. H. B. Anderson, I. T. Nash, Carol Lanjus, W. P. Wynn, J. N. Boyd, J. R. A. Vaughn, J. M. O'Brien, J. A. Wailes. The Duncan class was organized at the Duncan school house in 1872, during the pastorate of Lilburn Rush. A Sunday school was organized at this time and Frank Merrell was the first superintendent. Some of the early members of the class were: Levin Duncan and family, Frank Merrell and family, W. H. Duncan and family, Wm. Boyd and family, W. O. G. Potter, H. H. Johnson.

(Continued on page 5, Sec. B.)

TEACHERS TRAINING CLASS SHELBYVILLE HIGH SCHOOL 1924



Mabel Allen, Lura Lee Robertson, Anita Keller, Irene Prange, Mary Ralls, Betty Jameson, Jessie Smoot, Roy Staggs, Marie Sanders, Beulah Smoot, Goldie Boster, Georgia Duncan, Myra Priest, Elaine Feely, Hazel Ruth, Leo Parsons, Madalin Clough, teacher.

CATTLE DEPARTMENT
J. B. Andrews
Res. Phone, Express 851
J. L. Mason
Bert Morse

HOG DEPARTMENT
A. P. Hensley
Res. Phone, East 5192
L. R. Hensley
H. W. Throckmorton

Hensley-Andrews Com. Co.

Ask the National Stock Yards National Bank About Us.
NATIONAL STOCK YARDS
ILLINOIS
"We Are Bonded For Your Protection"

OFFICE
A. F. Crocket
C. L. Harris

Office Phone, Bridge 3400
Cattle Yards, East 816
Hog House, East 6409

GIVE US A TRIAL

MR. FARMER

You work hard—you deserve a fair return from your labor and investment.

In order to attain that goal, it is necessary for you to sell your stock on an **OPEN COMPETITIVE MARKET**—and did it ever occur to you that no advance in prices ever originated elsewhere?

Therefore, if you are to profit most, you must be represented on the market by the best salesmanship available.

WE ARE PROUD of the personnel of our organization. Through the salesmen's efforts, many an average offering brings better-than-average price. Salesmanship is a mighty important factor at a time like this when such a wide spread in prices prevails.

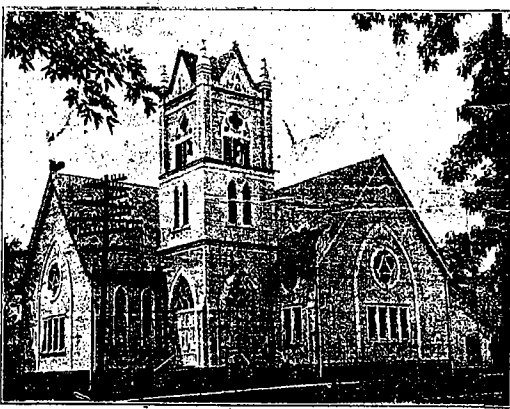
CONGRATULATIONS to Shelby County on the anniversary of its one-hundred years of progress. We hope the future will be brighter and happier, and that we may continue to serve you as we have in the past.

JOHN CLAY & COMPANY

National Stock Yards, Ill.

HOUSES

- Chicago, Ill.
- Omaha, Nebr.
- Denver, Colo.
- Kansas City, Mo.
- Ft. Worth, Texas
- Ogden, Utah
- St. Joseph, Mo.
- Sioux City, Iowa
- St. Paul, Minn.



SHELBYVILLE METHODIST CHURCH

HISTORY OF METHODIST CHURCHES OF SHELBY CO.

(Continued from page 4, Sec. B) T. Coard and family, S. B. Lowman and family, J. E. Moore and family, J. F. Raplee and family, Jno. Willee and family, W. H. Phipps and wife. The present church building was erected during the pastorate of Thompson Penn, in 1888, at a cost of \$1400 in cash, besides donated work. J. F. Raplee, W. H. Duncan and S. B. Lowman were the building committee. The church was dedicated by Dr. E. M. Bounds of St. Louis, Mo., September 2nd, 1888. The first Sunday school held in the church was the next Sunday, September 9th. The land on which the church stands, one and one-fourth acres, was donated by Levin Duncan.

Pastors who have served the charge: L. Rush, S. H. Milam, J. F. Shores, V. J. Holliday, A. S. Bowles, O. B. Holliday, J. S. Todd, J. M. O'Brien, T. Penn, J. D. Hunt, E. L. Lee, Walter Tool, W. W. McMurry, B. B. Harvey, J. J. Reed, B. F. Leake, A. V. Bailey, J. W. Tanquary, E. J. Speer, W. O. Medley, S. T. Hoover, M. A. West, and J. M. Bone is serving this church for his sixth consecutive year.

When the Ed Grapevine family of eight, and the Peter Shouman family of nine, moved from Pittsburgh, Penn, in 1871, and located south of Clarence, in the vicinity where Zion church was to be built, lumber was on the ground for building this church. It was built in 1872, and dedicated by Dr. Cunningham, of St. Louis, Mo. Ed Grapevine and family, Peter Shouman and family, John Randal and family, Will Dimmitt, Uncle Dickey Perry, a local preacher, and his family, Will Carothers, Sunday school superintendent, and his family, were charter members of this church. Rev. Bawlsim and family also lived in this community. In later years, Mr. Reuben Taylor and family, Mr. Colberts and family, and Thos. Moss and family were members of this class. This class was served by pastors from Clarence and other points.

The Hunnewell class was organized about 1876, and the first preacher was Rev. T. DeMoss, a Methodist. Services were first held in the school house. The church was built about 1877. J. V. Cox, Wm. Jones, and Dave Withrup were the building committee. Before this building was finished it was blown down and had to be rebuilt. In later years this present building was remodeled. On April 30, 1935, this church was destroyed by fire. Re-

pair work on the floors was being done and the workmen had kept a fire in the stove during the day. The blaze, when first discovered by a neighbor, was burning in the south wall of the building about 1:30 a. m. The church furnishings were saved except the pews. Insurance in the amount of \$1600 was carried on the building and \$600 on the furnishings. This class is preparing to erect a new building on the present site.

Some of the charter members were J. V. Cox, Thos. Irons, Ed Tool, Wm. Blackburn, Matthew Cox, Wm. Jones, Dave Withrup. The pastors who have served this charge since 1877 are: T. Penn, Walter Tool, J. S. Todd, H. W. James, S. H. Milam, B. F. Johnson, C. T. McAnally, C. K. Shilling, J. L. Taylor, J. S. Frazier, A. V. Bailey, C. O. Ransford, L. T. Fawks, F. E. Taylor, S. R. Dillman, W. D. Neal, Robert White, G. B. Smith, J. O. Whitworth, O. Blackburn, R. O. Triplett, E. J. Speer, W. H. Son, Marion Moore, J. A. Hughes, R. A. Skelton, E. E. Mangold, and the present pastor is M. R. Lark.

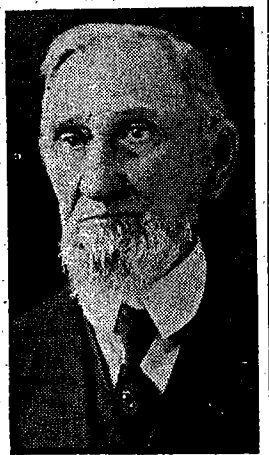
The Pleasant View church was organized in 1881, and a frame church was erected at a cost of \$1000. The charter members of this church were J. A. Brown, J. H. Brown, Lucy V. Brown, Thos. T. Brown, F. M. Brown, Mary B. Carlisle, J. W. Carlisle, Julia Gardner, J. R. Glasscock, Mattie Glasscock, Fannie L. Glasscock, Margarette Glasscock, Annie L. McGraw, Jennie Oder, Jas. W. Settle, Carrie Settle Elizabeth Seidemeier. Pastors who served this church were: T. B. Kendall, Wm. M. Wainright, Jas. Penn. This class has been disbanded for a number of years, and its members have united with other Methodist churches.

The Bethany church was erected in 1881 at a cost of \$1200. An organization was effected with the following members: R. J. Taylor and wife, Geo. Carmichael and wife, Lula Z. Taylor, C. E. Scott, Angie Forman, Sarah Smith, Sallie Raine, Lucia Carmichael. This church was dedicated in July, 1884. Among the pastors have been W. A. Tool, J. M. O'Brien, O. B. Holliday, J. J. Reed, E. J. Speer, B. B. Harvey, B. F. Leak, S. E. Hoover, M. A. West. This class has been a part of the Shelbyville charge for some years.

The Lakenan class was organized during the pastorate of S. H. Milam, with J. R. A. Vaughn as P. E., in 1887. Services were first held in the school house. During this same year a church building was erected at a cost of about \$1400. Much of the

labor on the building was donated. E. C. Phillips, S. D. Proffitt and A. L. Freeland were the building committee. This church was dedicated by Rev. J. M. O'Brien, August, 1887. Charter members of this class were: E. C. Phillips and family, S. D. Proffitt and family, A. L. Freeland and family, M. A. Saunders and family, Hardin Douglass, D. M. DeWitt, Mrs. Susan Leake.

Pastors who have served the charge are: S. H. Milam, E. C. Morgan, J. W. Ham, W. W. McMurry, J. R. Kincaid, L. F. Par-



W. C. MAGGART.

The late W. C. Maggart was one of the most widely known pioneer Methodist ministers in Missouri. He died Dec. 15, 1926, at the age of 87, in Shelbyville, where he spent the last few years of his life. He had missed only one annual conference in 46 years.

ker, Robt. McIlvoy, Fielding Marvin, Ned Hill, D. R. McBee, J. L. Roberts, E. D. Watson, E. C. Cline. The present pastor is L. C. Maggart. This church is now connected with the Shelbyville Circuit.

In 1883, Rev. Armstrong, a Cumberland Presbyterian preacher, conducted a revival meeting at the Robison school house, which resulted in many conversions. The O'Brien class grew out of this meeting. Rev. Wm. S. E. Hoover, M. A. West, Wainwright, who was located at Shelbyville, first conducted services for this class, which were held at the school house.

In 1884, J. M. O'Brien was appointed as the pastor of Shelbyville Circuit, which included this class. It was during this year that the O'Brien Chapel was built at a cost of \$700, in cash, besides much donated work. J. W. Garri-

son gave the ground on which the church was built. J. L. Feely, W. R. Poague and Jas. Edelen, were the building committee. The charter members were: W. R. Poague and family, Jas. Edelen and family, J. W. Garrison and family, J. L. Feely and family, D. B. Pritchard and family, Mr. Higbee and family J. W. Pollard and family, Lewis Gwynn and family, J. W. Dines and family, W. R. Keith and family.

This church was served by the pastors of the Shelbyville Circuit, some of whom were: E. J. Speer, P. F. Leak, B. B. Harvey, W. O. Medley, J. M. O'Brien.

Because of the fact that so many members had been removed by death and otherwise, the remaining members thought it unwise to try to continue longer as a class. So, some years since, the Quarterly Conference ordered the property sold, and the proceeds of the sale were invested in the parsonage property at Shelbyville, and the remaining membership was transferred to the Shelbyville church.

In 1886, Rev. S. H. Milam and J. M. O'Brien held a meeting at Oak Dale, during which there were 135 conversions. From here they went to Kendall, where they had a wonderful revival, which was conducted in the old Temperance Hall. One of the results of this meeting was the organization of the Mt. Olive class. This class continued to worship in the hall until 1889, when, during the pastorate of C. T. McAnally, the present church was built. This church was dedicated by the father of the pastor, Dr. D. R. McAnally, then editor of the St. Louis Christian Advocate, July, 1890. This class has belonged to both the Lakenan and Hunnewell charges.

Some of the charter members were: Chas. A. Snider and wife, M. F. Snider and wife, H. F. Snider and wife, J. P. Snider and wife, J. B. Snider and wife, W. O. McBurney and wife, Jno. Parrick and family, Henry Green and Robt. Coleman and wife, Mrs. S. T. Blackburn and wife, Ann Coleman, Lizzie Hightower, J. W. Hightower, M. Blackburn

and wife, Jas. Blackburn and wife.

The pastors who served the church are: C. T. McAnally, W.

W. McMurry, J. C. Carney, Robt. J. McIlvoy, E. C. Morgan, T. B. Dillman, Ned Hill, C. I. Hoy, O. Reagan, J. O. Coppage, J. R. Kin-

L. Martin, H. A. Showmaker, J. C. Cline, S. R. Hill, C. I. Hoy, O. Reagan, J. O. Coppage, J. R. Kin- (Continued on page 8, Sec. B)

"Turn of the Century Greetings TO Shelby County FROM Adair County AND Grim-Smith Hospital and Clinic"

KIRKSVILLE, MISSOURI

Satisfied Customers!

To build up a list of satisfied customers is the goal of every reliable business enterprise. For a business is built by the continued patronage of old customers as well as by the procuring of new customers.

We Have Them!

We are proud to state that we have a long list of satisfied customers which grows larger week by week. In all of our dealings with you we have kept in mind the idea that our success must be based upon your continued good will.

We give you the advantage of years of experience in the live stock markets. Each sale brings to us this personal responsibility: To obtain the best prices obtainable, whether your shipment be several truck loads or a single offering.

Thank You!

Thank you for your patronage; thank you for your confidence—we hope they will continue to be merited.



CENTENNIAL GREETINGS

Allow me to take this means of extending best wishes to you on your Shelby County Centennial.

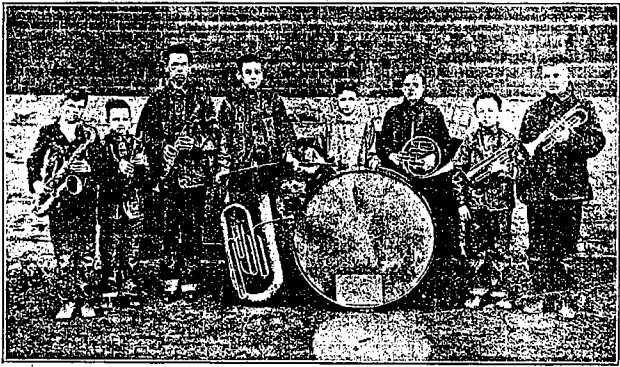
I hope that I may be able to see all of my Shelby county friends and patrons personally during the celebration.

Sincerely, P. V. JOHNSON

P. V. Johnson Commission Co.

Mississippi Valley Stock Yards St. Louis, Mo.

OVERALL BAND, SHELBYVILLE GRADE SCHOOL, 1924



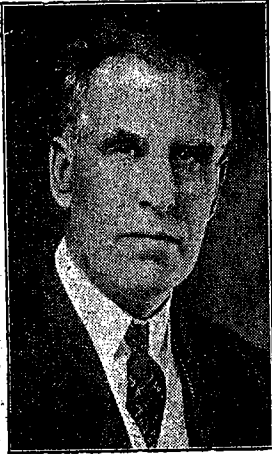
Billie Cadwell, Eugene Feely, Lester Howerton, Sheldon Collier, Richard Collier, George McDowell, Paul Sanders, and Howard Vanskike, director.



SHELBY COUNTY INFIRMARY

CHRISTIAN CHURCHES OF SHELBY COUNTY

(Continued from page 3, Sec. B) enties and a paper, dated April 25, 1876, was circulated to raise a fund for a new building. The building was completed and a good substantial membership was recorded and the work started forward under the ministry of such men as Rev. Dorsey, E. C. Browning and J. T. Welch. In the year 1891, Rev. F. M. Branich held a meeting in which about seventy-five members were added to the congregation, sixty-eight by confession and baptism. The congregation was reorganized and the building remodeled. Since that time Hagers Grove has been one of the most active of the churches in Shelby county.



F. M. BRANICH

Other organizations were formed about this time and in the years following. At present there are fifteen Christian churches in Shelby County. Most of them are active and have regular preaching or Bible school. There are at present four ministers living in the county and serving these churches. Rev. J. L. Shoemaker at Shelbyville, who began preaching in the county in 1918 and is serving his eleventh year; Rev. Blacklock, pastor at Shelbina; also Rev. Charles Daniels, who is a Shelby county product, lives at Shelbina and serves at Maud and Union; Rev. Branich, who has given much of his life to Shelby county, lives at Shelbyville and preaches at Hunnewell and other nearby churches. The following churches are active either as independent bodies or in cooperation with some other religious body:

Shelbyville, Shelbina, Bethel, Leonard, Berea, Hagers Grove, Cherry Box, Maude, Union, Hunnewell, Lakenan, Clarence, Emden, Concord and Lentner.

The Christian churches of Shelby County, like all other organizations, have had their ups and downs but are still serving the communities of which they are a part with the hope of helping to make the kingdoms of this world the kingdoms of the Lord and Christ.

HISTORY OF MT. HOPE EV. LUTHERAN CHURCH

By Rev. R. Frerking

The history of the establishment and growth of the Lutheran Church in Shelby County is largely a story of the coming of German immigrants of the Lutheran faith. The very first of these immigrants to settle in Shelby county was the John Doss family. These people came to America in the year 1864, and located on a farm west of Shelbyville in the fall of 1866.

Though the Doss' were very poor and lacked not only the comforts but even some of the things regarded as the very necessities of life, there was nothing which they seemed to miss so greatly, so profoundly, as the services of their church. No Lutheran church was within reach. So they lived in the hopes that some day they might have a church close by where they might worship God according to the dictates of their conscience, and take their children for religious instruction. Friends of the family still recall how Mother Doss prayed for others of her faith and tongue to come in order that these hopes might be realized. And that there is a God in the heavens who hears the prayers of His faithful people, Mt. Hope Lutheran Church stands as a monument on a corner of the

very farm later owned and operated by the Doss'.

Among the very first to settle in Shelby county, in answer to the Doss' prayers were five



R. FRERKING

young men, all single, who came directly from Australia where they had spent several years in the gold fields. These young men were the Messrs. John Neuschaefer, Emil Claussen, Jacob Gaul, Ernst Schmidt, and Adolf Damkoehler. They arrived in Shelby county in the month of September, 1868. A month later they were followed by Mr. and Mrs. Nikolaus von Thun and family, Mr. and Mrs. Peter Reinheimer and family, Mr. and Mrs. Valentine Krauter and family and the Messrs. Nikolaus Sass and Frederick Hoewler. These people had also left Germany during the Australian gold rush in the middle of the last century; but they had since migrated to Canada where they spent about a year previous to coming to Shelby county.

Soon after their arrival, on a Sunday morning in the month of October, 1868, these immigrants held the first Lutheran service ever conducted on Shelby county soil. The service was held under a shade tree on the William Graham farm, seven miles west of Shelbyville. Mr. Nikolaus von Thun and Mr. Peter Reinheimer presided. Three members of the congregation who attended this service are still living, namely, Mrs. Catherine Neuschaefer and the Messrs. William H. and John von Thun.

The shade tree on the Graham farm continued to serve as the meeting place for these devout people until they had built their log houses. Thereafter they met for worship in their homes. Services, in which German sermons were read by various members, were held in the mornings and Sunday school was conducted in the afternoons.

In 1870 the meeting place was moved to the Red Star school house. And in December of the same year the congregation welcomed its first pastor into its midst, the Reverend Frederick Munzel. Pastor Munzel, a native of Germany, had served as a missionary in Australia where a goodly portion of the members became acquainted with him. He had since returned to Germany and been assigned to mission work in Rumania where he re-

ceived and accepted the call to Shelby county.

A parsonage was erected for Pastor Munzel on the old Nikolaus Sass farm. It was built by Mr. William Hirlingler, who donated his services. The house is still standing, being occupied at the present time by Mr. and Mrs. Elmer Claussen.

The Reverend Muzel conducted regular services in Red Star school for about five years, then he accepted a call to Quincy, Illinois. And from Quincy he continued to serve the congregation once a month until 1879 when the Reverend E. C. Conrad was called. Pastor Conrad also served the congregation from Quincy, conducting services every fourth Sunday until his health failed in the year 1900.

During the ministries of these first two pastors the membership of Mt. Hope increased quite steadily as other German immigrants came and settled down in the county. Among these later immigrants might be mentioned: Christopher Rathjen who came in 1868, the Heinze family in 1872, Henry Arnold in 1881, the Keller family in 1882, the Werr's in 1886, and the Dahn's in 1895.

By 1882 the membership had increased and prospered to such an extent that it was decided to build a church. A lot had previously been purchased for this purpose from the Doss'. And in the fall of the year the building was begun. Mr. Peter Nothnagel and Mr. Louis Reinheimer laid the foundation. Other members hauled the building materials. The sills were donated by Mr. Madison Priest. They were heavy and some of them still remain in the building. The church was completed late in the fall save for the plastering, which was not done until the following spring. However services were held in the building during the winter, and it has ever since served as the place of worship for the Lutherans of Shelby county.

In 1901 after the resignation of Pastor Conrad, the congrega-

tion called the Reverend C. Schroeder of Macon, Missouri, who conducted services every third Sunday until his death in 1907. He was succeeded by the following Macon pastors: E. Lehr who served from 1908-1913; J. W. Lehr 1913-1916; B. Selcke 1917-1922 and V. H. Grimm 1923-1928. In 1928 the present pastor was called, who, since 1930, has served the congregation on a full-time basis.

Mt. Hope Lutheran Church numbers about one hundred souls and a little over sixty communicants. Though the membership is not large, God has blessed the sons and daughters of the old Lutheran settlers with not only the means, but also the heart which prompts them to use their means cheerfully and liberally in the interests of His Kingdom. Besides supporting their pastor comfortably in their midst, they have consistently raised around \$400 each year for missions and benevolent purposes.

The present officers of the congregation are the following: Messrs. Fred Werr, Louis Neuschaefer and Ernest Dahn, deacons; Mr. William Werr, secretary; and Mr. Martin Heinze, Treasurer. Mr. William H. von Thun is superintendent of the Sunday school, in which capacity he has served for over twenty-five years, and Mr. Eversz Werr is secretary and treasurer.

THE HISTORY OF BACON CHAPEL AND VICINITY

(By H. S. Carroll)

Bacon Chapel, located two and one-half miles northeast of Lentner, on the south line and at the center of this line of Section nine, Township 57, Range 11, is probably one of the best and most widely known churches in Shelby county. The first early pioneers, who settled in this neighborhood, came from the Eastern states, of course, a large number of them from Delaware, Maryland, Kentucky, Virginia and Indiana. The first settlements we have any

record of, date back to as far as 1830, but there were, of course, some few here long before that, or at least several years before.

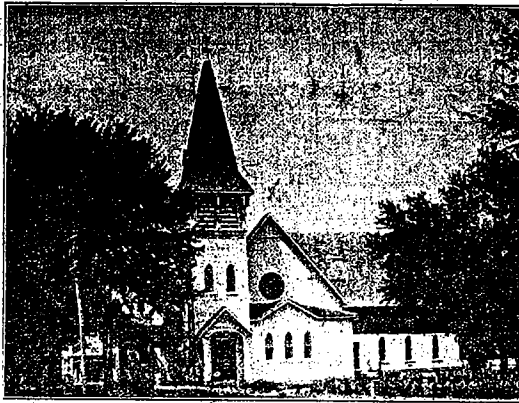
The following were among the very first settlers in the Bacon neighborhood: Malcolm Wood, James Carothers, Perry B. Moore, Isaac W. Moore, Mrs. Mary Walles, Pettyman Blizzard, James R. Barr, Lacy Morris, Stanford Drain, James Carroll, Barclay Carroll, John B. Lewis, James Parker, Major Taylor, Robert Brewington, and others. Running true to the custom of all the early pioneers, some of the more pious citizens decided that they should have a place of worship. There being no church building in those days, they decided to organize a Sunday school, and did so in 1838, and the first meetings were held in the old Bacon school house, which was situated about three quarters of a mile north of the present church, on land now owned by Chas. L. Carroll. This was not really a school house, but school was held in a room of the residence that stood there then. This was the meeting place until 1845, when the first church was built, just south of the present building, on land donated by George Bacon, who had entered and bought quite a lot of land around there. Mr. Bacon never lived here, but was a resident of Hannibal, and in his honor the name of Bacon Chapel was given that church.

The class was organized with the following (nine in number) as charter members: Perry B. Moore and wife; Chas. Christian and wife, a Mr. Strayer and wife, James Carroll and wife (This was the grandfather of our present James Carroll and the writer), and another person whose name I could not learn. However, these nine were the original members of the first or old church. The membership grew steadily until it was found desirable and necessary to erect a new and larger building, and the present building, the oldest church in Shelby county, was built in 1870, and is still in a good state of preservation. Some think that a church in or near Oak Dale is the older,

but from all information obtainable, there is no doubt that Bacon Chapel is the senior church in the county. The present church was dedicated by the Rev. Dr. Vincent of St. Louis, a great preacher and Mason. The growth of the membership was as rapid as the settlement of the county, and in the heyday of its glory its members numbered up well in the hundreds. The old time religion was preached and practiced by the early history of the church and when "big meetings" were held the building, which is a very large one, would be filled to capacity. The most successful of all efforts was the noted and well-known protracted meeting held by the pastor, the Rev. J. M. O'Brien, during the winter of 1883-84. The meeting was held in the dead of winter. It was very cold and a deep snow lay on the ground, but this did not

in any way detract from the interest and success of the meeting. In those days we had only horse-drawn vehicles, mostly lumber wagons and bob-sleds as conveyances, but they turned out one hundred per cent and the bid chapel was jammed from front to rear at each service, which was held each morning and evening. While this is well within the memory of the writer, we have forgotten the large number of conversions, but they were well above one hundred, and this was probably the peak of the grand old church's popularity. Quite often, during the meeting, I remember that the pastor would get up to read his sermon lesson and text and would get no further, as the shouting would begin, and singing and sermon were not needed. It was just like looking straight into the ground, but this did not

(Continued to page 7, Sec. B)



SHELBYVILLE CHRISTIAN CHURCH

Expressing Our APPRECIATION

During the past fifteen years, the Laughlin Hospital has had a great many patients from Shelby county and vicinity. Your loyalty and good will have always been and will ever continue to be valued by us.

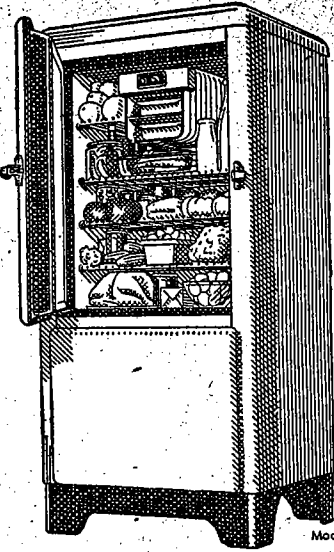
ON YOUR CENTENNIAL

On the anniversary of the one-hundredth birthday of Shelby county we send greetings to our patrons and friends. We are looking forward to a future of continued service and of wider acquaintanceship, striving always toward this goal:

To be ready, whenever called upon, to relieve human distress.

Laughlin Hospital

GEORGE M. LAUGHLIN
Kirksville, Missouri



Model K-300

KELVINATOR QUALITY

(and you know what that means)

at the lowest price in Kelvinator history

Here's the most talked about value in electric refrigeration—a Kelvinator, the result of 21 years' experience, at a price you would pay for an ordinary electric refrigerator. It is super-powered with the same type mechanism used in the larger models. It has the same quality cabinet construction and many of the famous Kelvinator features of design. It's a great bargain and we will gladly show you its many features. See it before you buy.

\$99.75

**Economy Hardware, Macon, Mo.
N. C. Miller's Sons, Shelbyville, Mo.**

EVERY DAY—TWO THOUSAND NEW KELVINATOR OWNERS

THE HISTORY OF BACON CHAPEL AND VICINITY

(Continued from page 6, Sec. B)

heaven to be there. It went on for more than six weeks and closed. The next meeting was held by the Rev. A. C. Brown in 1894 and was almost as successful in interest, but not quite as many were converted. About this time, however, or just before this, the old church, resembling a real beehive in works, swarmed, and Duncan Chapel was built. This caused many of the grand old influential members of Bacon to move their membership to the new church. Among these were the late Judge Henry Duncan, wife and family, W. O. Lowman, S. B. Lowman, Thos. Coard, George Coard, Wm. Moore, the Raplees, Jas. and John, and their families, and the grand old patriarch, Uncle Levin Duncan, and family. I don't believe this county or state ever had a more pious and consecrated soul than Uncle Levin Duncan, and Lacy Morris, also all the former named, as well as dozens of others, were the salt of the earth.

Soon after the formation of this new church another, Lowman Chapel, was built down near Walkersville and named for that grand old saint, W. O. Lowman. This again reduced the membership of Bacon Chapel, and still another, Wesley Chapel, took another toll. At Lowman the Woods folks, some of the finest and best citizens and Christians of their day, moved to their new church, and when Wesley Chapel was built the Bacrs, George, James, John and Robert, Wesley Christian, and many others moved to their new church, and thus another reduction in the membership of the old mother church, Bacon. All this had its effect on the congregation. Two of the best and most consecrated of the old members of the Chapel were P. G. McBroom and John S. Gurdane. Mr. McBroom and family moved from here to Oregon in 1880, and J. S. Gurdane and several others, including our father, Benj. W. Carroll, Wm. H. Collins, David Lanham, Richard G. Winston, moved to the Pacific state. The first two and others remained there as well as Mr. Lanham and Winston, as long as they lived. They left here in 1882.

The church has been served by many mighty fine pastors in its long history: Revs. Wm. Pryor, Conley Smith, T. Ashby, Tyson Dines, Martin I. Eads, James M. Green, Jacob Sigler, James Wainright, James B. Callaway, E. K. Miller, James Monroe, T. DeMoss, W. W. McMurry, J. M. O'Brien, A. C. Browning, H. W. Buckner, Thompson Penn, Baily, Shemwell, Allison and others, have served as pastors and were all grand men. The present pastor is the Rev. L. C. Maggart a fine and excellent pastor.

Some of the more noted citizens of the Chapel community included John S. Duncan, Col. Benjamin, Sanford Drain, Mason Wheeler, John B. Lewis, and others we have named.

Removal by death and otherwise has reduced the membership until today it is very small, and the former interest of the membership has dwindled in numbers until it apparently has lost its one time power—changed in every way. Dozens of the old patriarchs' remains lie buried in the large cemetery which surrounds the Chapel on three sides, but their influence is still felt and apparent in the generation now holding forth. During its zenith hour it sent out several young men as pastors who became, and are, great men in the Master's

work: J. A. Wailes, Alonzo Gunby, son of the grand old man still living in Clarence, Wm. K. Gunby, whose father, Stephen Gunby, was one of the stalwart men and members of the church; Rev. Chas. W. Webdell, W. B. Wheeler and others. These young men were converted in meetings held in the long ago at old Bacon Chapel and went out into the world and have made their mark high on the banner of fame. The Rev. Webdell is now a presiding elder of a district, and Bro. Gunby is in the West doing valiant work for the Master.

No church in the county has a greater or grander history back of its activities than old Bacon Chapel. It was founded by men and women who early in life had dedicated their lives and all to the work of saving souls and they made it their daily task to seek out and find the lost and never knew what it meant to stop until the lost soul returned to the fold. For years they carried on and they never faltered. It used to be an axiom that many quoted, that no one could move into the Bacon Chapel neighborhood and not become a Christian, if they were not before, and it was practically and literally true, for I have lived to know that to be a fact. That this is not true today cannot be laid at the door of the old pioneer builders and their descendants for decades, for they also labored as did their forefathers. And while they still have the form, they lack much of the power that once was proclaimed by the fathers and mothers. Let us hope that the turn may come when once more those old walls will ring with songs, prayers and shouts as they did in the long ago. James King was also one of the pillars of this church for many years. In fact, I doubt if there was another who was as strict in his religious belief as was this great man, always on hand to do his part, and he did it with a will that broached no deceit. Henry Phipps, another fine man, was a faithful member, who was always willing and ready to answer any call to duty. As he lived north of the river, he no doubt went off with the Duncan Chapel contingent when that church was formed. The Haydens, Joseph and James, the Smiths, Robert and Lewis were two of the early settlers a mile or two west of the church; also Wesley Christian and his fine family, Major Taylor and Perry, his son, and their families; and a little later Nathan Taylor, son of Reuy Taylor, who of all we have mentioned, I believe, remains to carry on and he is doing that to the best of his ability, he being probably the oldest member now on record. There were probably many other good folks we should mention in connection with the history of this historic church, but we fail to remember them at this time.

A feature worth mentioning is that in the early period of this church many great camp meetings were held out in the woods, where they would erect a large arbor of limbs of the trees, with improvised seats of native lumber, where they would camp in tents for weeks. I remember well the last one held just north of Walkersville along about 1875.

We are indebted to our good old friend, W. K. Gunby, now 88 years old, J. W. Carroll and wife, and the Shelby County History for many of the facts here recorded.

First settlements, in Jackson township were made in the Spring of 1833, and the township was organized in 1837.

HISTORY OF LOONEY'S CREEK BAPTIST CHURCH

By C. A. Buckingham
The primitive Baptist Church called Looney's Creek was organized at the home of Caroline Looney on Saturday, the 14th of May, 1836.

Elders Robert Hendron and Charles Turner were present to give their ministerial aid and Eld. Robert Hendron was chosen moderator and Wm. Moffett, clerk. The following were members



C. A. BUCKINGHAM

of Pleasant Hill Church in Marion county, Missouri: Dodes Gentry and Ally, his wife; James Lear and Parlay, his wife; Wm. Randolph and Nancy, his wife; Caroline Looney and Wm. Moffett.

Elder Henry Louthan and wife Mary united with the church on the 4th Saturday in July, 1836. On the 4th Saturday in August Elder Henry Louthan was unanimously chosen Pastor of the church, a position which he held until the 4th Saturday in November, 1870, when he resigned and was followed by Elder Franklin M. Turner.

The home of Caroline Looney was located on the NE of SW of Sec. 6, Twp. 58, R9. The school

house where services were first held was located on NW of SW Sec. 6, Twp. 58, R9.

The site of the present church is Sec. 33, Twp. 59, R9. Days of meeting are 2nd Sunday and Saturday before in each month.

CODE HAYWARD DAVIS WRITES FROM FLORIDA

McMeekin Place, Rt. 3 Hawthorne, Florida. July 1, 1935.

Editor Shelby County Herald Shelbyville, Missouri Dear Mr. Hewitt:

I am very glad to comply with your request to write a letter for your anniversary edition of the Herald in honor of the 100th birthday of the "Old Home Town."

We can well be proud of our ancestors who first settled and later organized the town of Shelbyville, and this Centennial commemorates their achievement and the progress made up to the present time. No doubt it was the beauty of the country as much as anything else that lured such a brave, sturdy class of men and women of sterling character to come here and make their future home. They were the builders, and today none of us would relish the hardships they were obliged to endure.

It is only natural that I write a brief history of those who made it possible for me to enter into the picture. My grandfather on my mother's side, was Anthony Blackford, who came to Shelby County in 1835; my grandfather, Leonard Dobbin, entered land there in 1840; he married my grandmother, Miss Mary Jane Blackford, daughter of Anthony Blackford, in 1842; my father, Lewis Albert Hayward, came to Missouri in 1857, and to Shelbyville about 1869; he married my mother, Miss Mary Ellen Dobbin, daughter of Leonard Dobbin, in 1870. Each and every one of the above mentioned lived all, or most of their lives, and are buried in Shelby

county, with the exception of my father, who is buried in the National Military Cemetery in Ft. Leavenworth, Kansas. He

of the room and all the kids in it, are still clear in my memory. The new 4-room brick school down in the east end of town was awe-inspiring! I can remember my first day there as well as the last; we were promoted from room to room, and what a lot of studies those rooms covered! We had capable teachers and they made our studies interesting. In fact, all my time spent in Shelbyville was very enjoyable. Setting type in the Herald office and learning the details of the abstract business from my father was good experience. When it was decided to have the first Record Books ever made in Shelby County copied into new books, I was very happy to be chosen along with Grace Carmichael to do this work. The salary was small, but it was worth a lot to take lessons in handwriting from those books, and to have some of the office holders look over my shoulder and say I was improving in my writing. Those were good old days.



CODE HAYWARD DAVIS

was a direct descendant of Thomas Heywood, Jr., of South Carolina, one of the signers of the Declaration of Independence.

Now, by the time my recollection begins Shelbyville had grown to be quite a town; men did not carry the mail in their hats; a house-raising was not exactly the idea of a good time; women had discarded calico and homespun dresses, hoop skirts and bustles, but they did make rag carpets, roasted their own coffee, made light-bread and did many other homey things which cannot be compared to present day activities.

Our schools were fascinating; they must have been, for to this day, when I have occasion to spell dog, cat, hen, etc., the picture of Miss Eva Stuart, our first teacher, her "pointer", the chart with pictures of the dog, cat and hen, the general layout

of such great interest of bygone days. You can see for yourself that if they had to look for the visitors in tree tops, cellars or down on Black Creek—well, the Centennial would be turned into a merry-go-round and most of us would be locked up. I just KNEW they'd be sorry they tore down that old calaboose!

I can think of many, many other things to write about, but will withhold them for discussion with my old friends, if I am fortunate enough to be present at the Centennial.

With kindest regards and best wishes to you and all my old friends and hoping to see you all in August,

Very sincerely,
Code Hayward Davis

of such great interest of bygone days. You can see for yourself that if they had to look for the visitors in tree tops, cellars or down on Black Creek—well, the Centennial would be turned into a merry-go-round and most of us would be locked up. I just KNEW they'd be sorry they tore down that old calaboose!

I can think of many, many other things to write about, but will withhold them for discussion with my old friends, if I am fortunate enough to be present at the Centennial.

With kindest regards and best wishes to you and all my old friends and hoping to see you all in August,

Very sincerely,
Code Hayward Davis

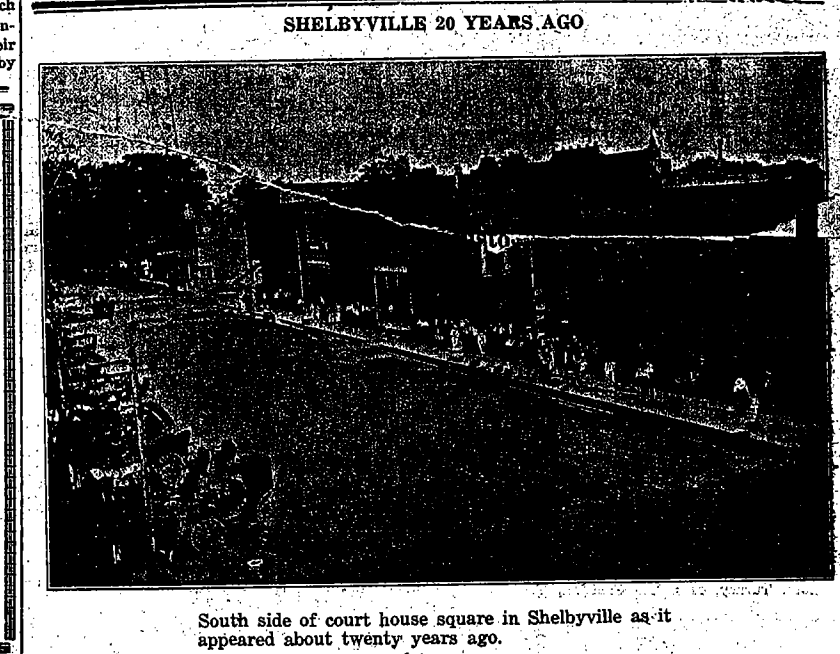
FIRST DEATH RECORDED IN SHELBY COUNTY

The first death of which there is any record in Shelby County was that of William P. Matson, a step-son of Obadiah Dickerson. He died of cholera in the summer 1833. He had been at Palmyra when the cholera broke out there, and on his way home had stopped at the house of McDonald Holliday to remain overnight, but was seized with cholera and died the next morning. At the burial of young Matson, his host, Mr. Holliday, was stricken with the same disease and died the next day. These were the only deaths from cholera in Shelby county that year.

The first settler in Clay township was Major Taylor who built a cabin at the southern edge of Salt River bottom in 1835.

The first school house in Salt River Township was on the present site of Bacon Chapel and was taught by John B. Lewis in 1838.

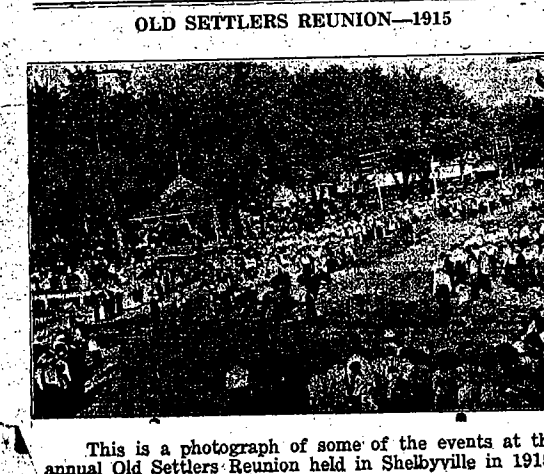
Greetings to You on
The Centennial Anniversary
of Shelby County
QUALITY—PRICE—SATISFACTION
MY AIM
Wade H. Swinney
Quality Shoe Repairing
SHELBYVILLE, MO.



SHELBYVILLE 20 YEARS AGO

South side of court house square in Shelbyville as it appeared about twenty years ago.

Don't Forget The Kiddies During The Shelby County Centennial
TREAT THEM TO THE BEST IN ICE CREAMS, ICES and FROZEN NOVELTIES.
You Are Assured of Our Continued Highest Quality at All Times.
And for that summer meal, HYGRADE-WALL ICE CREAM is the ideal dessert. You are certain of pleasing the most fastidious.
"IT'S A FOOD NOT A FAD"
In Shelbyville P. E. SANDERS GROCERY Phone 45
In Clarence TIMMONS CAFE
In Shelbyville WASHBURN CAFE
In Bethel GRAVES GROCERY
HyGrade-Wall
CREAMERIES, INC.
ICE CREAM
QUINCY-ILLINOIS
In Hunnewell ASH CAFE



This is a photograph of some of the events at the annual Old Settlers Reunion held in Shelbyville in 1915.

OLD SETTLERS REUNION—1915

HISTORY OF METHODIST CHURCHES OF SHELBY CO.

(Continued from page 5, Sec. B) L. Roberts, G. W. Meek, J. A. Hughes, R. A. Skelton, E. E. Mangold, and the present pastor is M. R. Lark.

The Lowman Chapel class was organized in 1839, during a wonderful revival, conducted by Rev. Robt. White, at Walkersville Baptist church, resulting in many conversions. The Baptist people generously offered their church in which this Methodist class conducted regular monthly services. The Baptist class held their Sunday school at the morning hour and the Methodists held their Sunday school in the afternoon. Encouraged by this good beginning, plans were made in 1890 for the building of the present Lowman Chapel, during the pastorate of W. W. McMurry. This church was dedicated by the Presiding Elder, Dr. J. H. Pritchett, January, 1891. Lowman Chapel was named in honor of W. O. Lowman, an old and life-long consecrated Methodist, who had years before organized and superintended the first Sunday school in the community. He also gave much encouragement and support to the building of the church. Lowman Chapel has maintained regular preaching services and a Sunday school since the organization of the class. Some of the charter members were Mr. and Mrs. Wes Wood, Mr. and Mrs. Samuel Harrison, Mr. and Mrs. Mack Swearingen, Hiram Morris, and Mrs. Jno. Wood, E. J. Britton, Mr. and Mrs. R. E. Wood, Mrs. Ella Swearingen, Mr. and Mrs. Henry Wiggins, Mr. and Mrs. D. M. Wood, W. O. Lowman and family.

The following have been the pastors of this class: W. W. McMurry, Jno. Holland, G. E. Tanquary, A. C. Browning, J. W. Ramsey, H. P. Bond, F. E. Taylor, C. F. Wimberly, W. O. Medley, M. L. Shemwell, H. W. Buckner, Robt. Melvov, J. W. England, C. H. Werner, A. W. Darter, J. W. Nelson, D. L. Sayers, H. P. Anglen, and the present pastor is L. C. Maggart.

The McMurry class was organized at Givan school house about 1891. W. W. McMurry conducted local regular preaching appointment. Rev. O. and conducted a revival.

resulted in the organization of this class. A church building was erected during the pastorate of Bro. McMurry, and dedicated in the fall of 1893, by Rev. Robt. White, then pastor of Shelbyina charge. W. P. Swearingen was the contractor and builder, Jno. Yost, Mr. Bailey & Son, and others worked on the job. This church, which cost about \$2500, burned several years ago and was never rebuilt. The membership of the church was transferred to the Shelbyina church. Some of the charter members were: Lewis Kincheoloe and wife, Jno. and Lena Knox, Bake Fry and wife, Robt. Turney, Mrs. Lee Caldwell, J. W. Faulk. Members of the building committee were: Lewis Kincheoloe, John Knox. The early pastors of this church were: W. W. McMurry, J. R. Kincaid, E. C. Morgan, Robt. Melvov. Other pastors who served this class were the pastors assigned to the Lakenan and Shelbyina Circuits, respectively.

The Wesley Chapel class was organized in 1894, and the church was built that same year. J. W. Minick, Jno. Barr, Jas. Barr, and Wesley Christian were the building committee. Mr. Christian donated one acre of land, on which the church stands. C. R. McAnally was the pastor when the church was built. The building cost about \$1800. Rev. J. M. O'Bryen dedicated this church. J. W. Minick and family, Jas. Barr and family, Jno. Barr and family, Wesley Christian and family. Among the early pastors were J. M. Dempsey and A. V. Bailey. Other pastors have been the preachers who have served the Clarence church.

Browning Chapel class was organized in 1895 during the pastorate of A. C. Browning. The church was built the same year, and it was dedicated in 1896 by Bishop Galloway.

This church was attached to the Quarterly Conference of the Shelbyina charge several years ago. Preaching services have not been held in this church for a number of years. At a session of the Quarterly Conference of the Shelbyina charge held in April, 1935, and presided over by Rev. W. L. Myers, P. E., this

body voted to give this building to the Hunnewell class to be used in the erection of a new church, to replace the building lost by fire.

The charter members were J. T. Keith and wife, Bettie Sparks, G. T. Sparks, Anna Taylor, B. F. Muldrow, Cyrus Way, M. L. Way, Alex Way and wife, I. N. Bonta and wife, May Kidwell, R. W. Hays and wife, M. E. Keith and wife, Lena Kimble, Kate Kimble, Elizabeth Ann (Grandmother) Barton, Billie Barton, Wm. Applegate and wife.

The preachers who have served this class are: A. C. Browning, T. A. Allison, C. F. Wimberly, J. W. Ramsey, R. M. Dameron, T. H. B. Anderson, J. R. Kincaid, T. B. Farry, H. W. Buckner, A. W. Darter, C. H. Werner, J. N. Boyd.

Those who have served the church as Presiding Elders within the bounds of the present Hannibal District, since 1865, are: W. M. Newland, B. H. Spencer, W. W. McMurry, Wm. Penn, R. A. Austin, J. P. Nolan, Wm. M. Rush, W. T. Boling, J. R. A. Vaughn, John Anderson, C. Grimes, E. K. Miller, O. B. Holliday, I. T. Nash, H. D. Thompson, W. P. Wynn, O. H. Phillips, Jno. W. Kimbrell, J. M. Bone, W. M. Alexander, G. A. Shadwick, S. E. Hoover, R. H. Cooper, Ernest Jones, J. H. Pritchett, B. D. Sipple, V. O. White, M. H. Moore, J. A. Mumpower, E. K. Miller, J. A. Snarr, G. A. Lenhoff, and the present Presiding Elder is W. L. Myers.

FIRST MISSOURI HOG IN 1541

Jefferson City, Mo.—Persons who trace their ancestry back to the Revolutionary War, or even to the Mayflower era, are far out-distanced in native lineage by the "scrub" hog of southern and southeastern Missouri. Ancestors of this animal came to America with Columbus on his second voyage in 1493, according to John Ashton in a special bulletin entitled "A History of Hogs and Pork Production in Missouri."

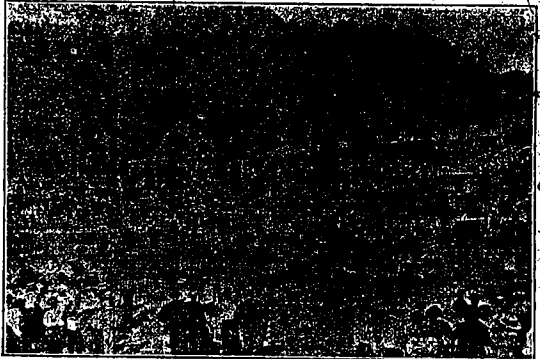
The author went back to the

old Spanish manuscripts for data which are said to prove conclusively that the first hogs to be brought to Missouri came with the expedition of Fernando de Soto, in April, 1541. This was more than half a century before the first swine were imported by the colonists on the eastern coast. That the secondary tribes of Indians obtained some of the hogs and raised them for food is shown by historical records quoted.

Hogs which were the ancestors of the Missouri "scrub" hogs were brought to Haiti by Columbus, and speedily introduced into Cuba, where they were bred extensively and also thrived in a wild state. It was in Cuba that De Soto fitted out his expedition which historians generally agree visited Southern Missouri.

Shelby County was named in honor of General Isaac Shelby, Kentucky's first governor.

AMONG THE EARLY EDUCATORS



Old Settlers' Day, Shelbyville, Mo., 1915



Sixty Years Young

Of all the stores doing business in Shelbyina on January 1st, 1875, only two remain. Of these the Lasley store is one.

No store can last sixty years without maintaining its reputation for good merchandise, honest prices, and fair dealing. A store with any other policy or reputation can not live that long.

Many centuries ago Socrates said, "The way to gain a good reputation is to endeavor to be what you desire to appear." That is as true now as when written.

Advice like that does not grow old. Nor does a business grow old that is built upon enduring principles. In business, age is nature's badge of merit.

To those who have not been coming to Lasley's for men's apparel, we invite you to come in and see for yourselves why your friends and neighbors have kept this store alive these many years.

1875 LASLEY'S 1935 SHELBYINA, MO. "Quality at Low Prices Since 1875"

Working For You and With You . . .

We have been selling live stock in a competitive market for many years. Our efforts, as we have worked for you, have been to sell your stock at the best possible advantage.

Our cattle, sheep and hog salesmen are all experts in their particular fields.

WE EXTEND GREETINGS ON YOUR CENTENNIAL

And we hope that we may be favored with a share of your patronage when you send your stock to market.

Hulen-Jones-Huitt Com. Co.

NATIONAL STOCK YARDS, ILL.

SALESMEN

- Cattle Dep't. Hog Dep't. Sheep Dep't. L. D. Hulen Roy Huitt W. E. Gant F. G. McChesney Jno. Hayes Forest Yancey



COURT HOUSE PARK