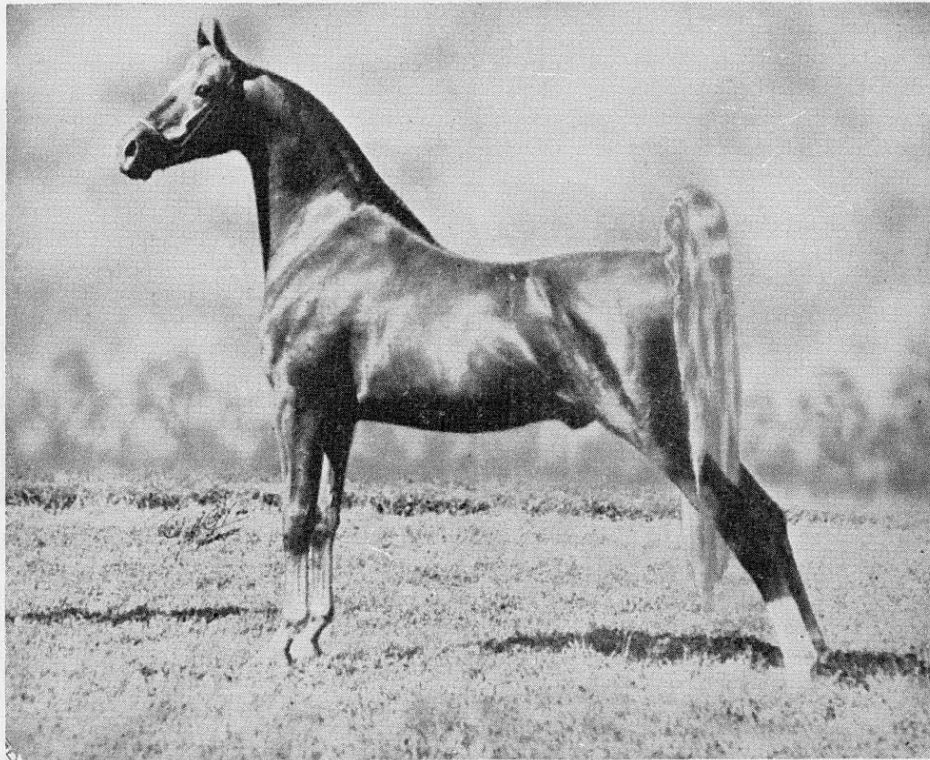


Over A Century of Champions

1850



1957

BROADACRES FARM

offers over a hundred years of progress in the breeding and developing of the American Saddle Horse, blends the past with the present and hope of the future, for five generations of Greenwells.

G. W. 1826

G. W. 1906

C. T. 1932

H. A. 1867

H. L. 1931

G. P. 1957

With the urge to move forward to pioneer lands not only an ambition, but a determination, George Washington Greenwell left his childhood home near Georgetown, Kentucky, and began the long trek to Missouri. Finding the desired location, reminding him of his native blue grass home, he secured some land in 1850 near the vicinity which is now Shelbina. There, with the saddle horses which he brought from Kentucky, began an era of raising and training horses — not only as a love for these sleek, fine animals—but as an industry which has provided a livelihood for several generations—being the present occupation of Welch Greenwell and Sons.