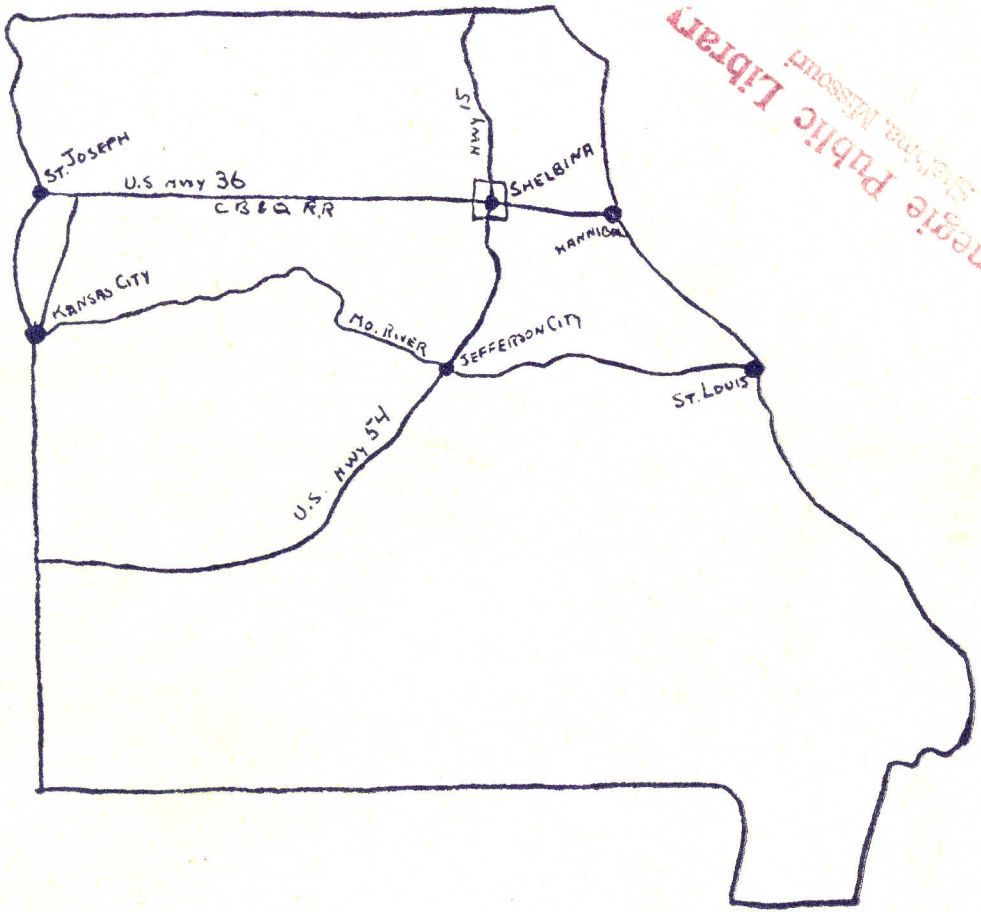


Industrial Survey 1947

SHELBINA, Mo.

and trade territory



SURVEY
Made By Committee
Shelbina Business Mens Cl

DEC 14

JAN 10

APR 9-

A survey of
SHELBINA, MO.
published
December
1947

Shelbina's existence began in 1857 when the Hannibal & St. Joe railroad reached this point and stopped for the winter, shacks put up by the workers remaining when the railroad construction moved westward. Shelbina comes from a combination of General Shelby, and his wife, Bina. The county was named Shelby.

Practically all of the early houses were on the north side of the railroad track.

The town's location soon made it a shipping point for Shelbyville and Paris, county seats of Shelby and Monroe counties, as well as for all the country north and south for more than 20 miles.

One of the earliest structures erected was the Thomas Hotel, which dated back to 1857 and stood where the Waverly Hotel now stands. In 1866 fire destroyed the Thomas Hotel and all the business houses fronting the railroad. The Masonic building and two business houses on this street were rebuilt in 1867 and the Waverly Hotel went up in 1871.

Shelbina was incorporated in 1867 and became a city of the 4th class in 1878. Growth in population and municipal improvements have been constant.

Shelbina has a unique location in that while it is only a mile and a half from the Monroe county border, every section of Shelby county has an all weather road which leads directly to the town.

In addition to all of Shelby county being its trade territory, the north one-third of Monroe county must also be considered in its territory, for mail, milk and bus routes cover that section.

City of Shelbina has an area of 4 square miles and a population of 2107 (1940 census).

It is the county's largest town and its population approximately equals that of any three other towns in Shelby county.

Shelbina is located on junction of U. S. Highway No. 36 and State Highway No. 15. It is 155 miles from St. Louis, 180 miles from Kansas City, 155 miles from St. Joseph, 40 miles from Hannibal and 360 miles from Chicago, Illinois. It is 70 miles south of the Iowa line and 93 miles north of the State Capital at Jefferson City.

Shelbina City Government:

Shelbina is a 4th class city. It has two wards, namely East and West Wards. Two aldermen are elected in each ward for a term of two years. The City Marshal and Collector, also Police Judge are elected for a term of two years. The City Attorney, Treasurer, Nightwatchman, Street commissioner and City Clerk are all appointed officers for a term of two years. These officers are appointed by the Mayor and approved by the Aldermen.

Police Force—Marshal and Nightwatchman.

Judiciary—Police Judge presides over the City Court.

The City owns and maintains its city hall.

City Income & Expenditures at close of last Fiscal Year:

Total Income	\$63,000.00
Total Expenditures	\$56,000.00

(In this amount paid out is included City improvements and some New Equipment).

City Fire Department:

The fire department consists of a new fire truck purchased in 1946 at a cost of about \$10,000.00. The City Marshal is Fire Chief. There have been no large fires in many years. Shelbina is rated as an 8th class town by insurance companies with losses comparatively low.

City Streets:

Shelbina has 12 miles of streets, all paved. In the business section the paving is concrete and in the residential section it has an oil and gravel surface. In 1946 the city spent \$12,000.00 on repairing and resurfacing its streets.

Lights:

Shelbina is one of the best lighted towns in the state. With the city owning the light plant, there is a white way throughout the business district, lights up and down all alleys in the business section, street lights at every corner and in the middle of many blocks. And additional lights are added as needed.

The Municipal Water, Power & Light Plant:

The Shelbina Water, Power & Light Plant is owned and operated by the City.

Water: All water is treated with Alum and Lime coagulation, settled and filtered and chlorinated. No raw water is used.

We have two sources of supply. Salt River, 3 miles from the city and the Municipal Lake, 1½ miles from town.

About one-third of daily pumpage is used by industry.

The water distribution system consists of about ten miles of 10", 8", 6", 4" and 2" cast iron pipe.

The water is purified in the following manner: Coagulation and sedimentation with Alum, Lime and Charcoal filtering and Chlorination and Cal Gon.

Capacity: Lake has 100,000,000 gallon capacity. Capacity of river not known.

Treating facilities—300,000 gallons per day.
Pumps—430,000 gallons per day.
Reservoirs—100,000 gallons.

Consumption—daily gallonage—seasonal variations. Daily pumpage average from 90,000 to 140,000 per day.

Surplus available—290,000 gallons.

Chemical and Bacteriological analysis of City Water:

Chemical Analysis—

Turbidity	0.8	Odor none—Color none	
Alkalinity Phenolphthalein	0	Chlorides	7.1
Total	35.0	Residue or Evaporation	
Bicarbonates (HCO ₃)	43.3	Total	170.0
Carbonates	0	Dissolved	170.0
Insoluble	3.6	Loss on Ignition	75.0
Iron and Aluminum Oxides	1.6	Total Hardness	71.0
Iron		Carbonate Hardness	35.0
Total	0.6	Non Carbonate Hardness	36.0
Sodium and Potassium	9.6	Nitrate Nitrogen	0.92
Calcium	23.5		
Sulfates	43.2		
Magnesium	2.9		

Water is passed by State Board of Health as to Bacteriological Analysis.
Hardness for Boiler Use—Lake Water-3 to 5 grains per gallon of hardness.
River Water-6 to 8 grains per gallon of Hardness.
Temperatures—Average 70 degrees.

Electricity:

Source of Electrical Power—Diesel Engines.

Generating Capacities 1320 KW.

Dependability of service by survey of outages.—Total one hour last year exclusive of storm damages.

Surplus of KW. available 820 KW.

Off peak contracts are available.

Kind of power:

3 phase—60 cycle—alternating current—voltage 2300-240/120

All the Shelbina dwelling houses are wired for electric light and power.

REA—A large per cent of the surrounding farm homes are furnished with electricity by the REA and expansion is being made daily.

Telephone Service:

Telephone service for Shelbina is furnished by the Western Light & Telephone Company, Inc., of Kansas City, Kansas. The Telephone Company serves 1050 telephones in and around Shelbina. All telephones within the city are Common Battery and are furnished and maintained by the telephone company. The rural telephones are of the Magneto type with local battery, part of the telephones being furnished by the Telephone Company and part by the subscriber.

All local and long distance calls are handled by the telephone operators. The number of calls handled by the operators for twenty four hours daily are 4826 or an average of two-hundred calls per hour. From eight to ten operators, all of whom are employed locally, are required to handle these calls.

Long distance service for Shelbina and surrounding subscribers is furnished by the Southwestern Bell Telephone Co., with two circuits to Hannibal, one to Monroe City, and one to Macon.

The following are the towns reached direct by the Shelbina subscribers: Shelbyville, Bethel, Clarence, Lentner, Maud, Granville, Lakenan and Hunnewell, with toll service to Clarence and Shelbyville.

The number of employees on the Telephone Company's payroll is eleven (11) and the payroll is approximately \$1,100.00 a month.

Education:

The Shelbina Public Schools consist of one three story grade building, a two story high school building, and a one story colored grade school building. The white school buildings are located at the corner of College and Center Streets on a five acre plot of ground.

The grade school building, a red brick building, houses the first six grades with a teacher for each grade. Average enrollment for the first six grades is approximately 150. The grade school building consisting of six class rooms, corridors, and little auditorium has equipment valued at \$2,312.

The high school building, a red brick two story structure, houses grades seven through twelve. This building consists of twelve class rooms, large study hall and library, auditorium seating approximately 800 people, gymnasium, shower rooms, offices and etc. Eleven teachers, including superintendent and principal and a full time secretary are on duty in the high school building. There is also a librarian on part time duty. This building has an average of 230 pupils enrolled. Equipment of the high school building is estimated at \$14,736.00.

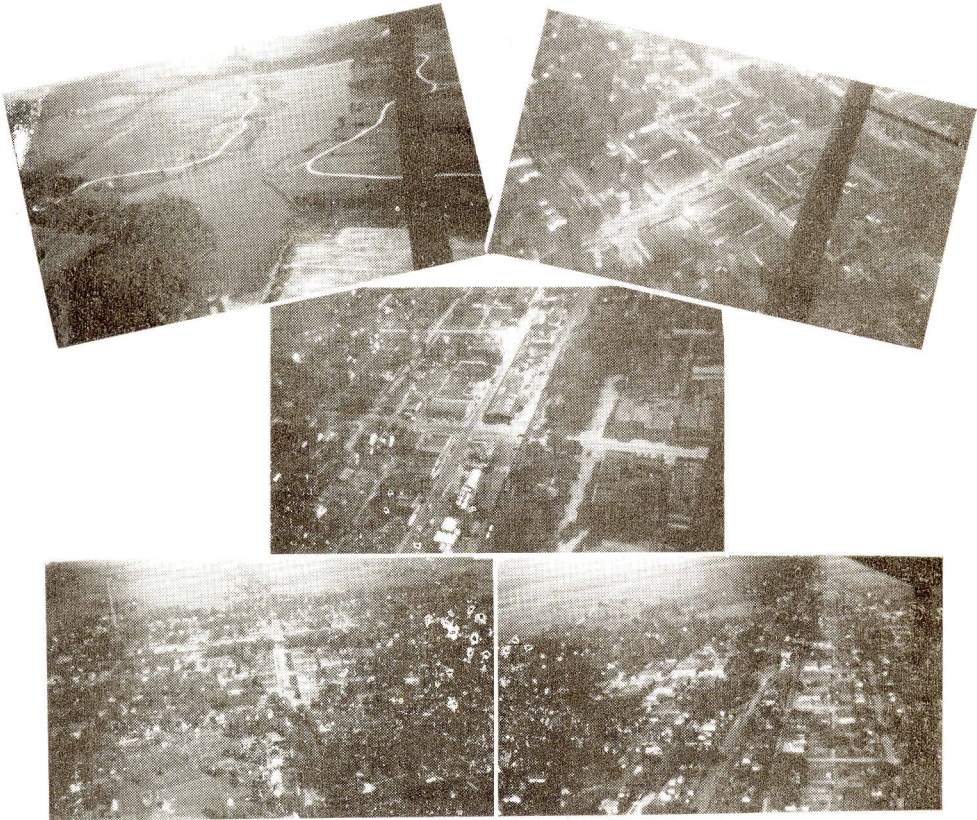
The school buildings have a present value of approximately \$125,000.00 Present valuation of the Shelbina Public School District is \$1,750,000.00 with a present school levy of \$1.35.

The high school, a first class Missouri High School and a member of the North Central Association of Secondary Schools, offers a course of study including 38 subjects.

The school employs a music supervisor, who instructs a 50 piece high school band and also a beginner's band approximately same size.

The high school has football, basketball and track teams all instructed by High School Coach.

Shelbina, as Seen from the Air



The above pictures were taken from an altitude of 1,000 feet.

Top, left—The city lake of 60 acres. View is from the south looking towards the dam. The shore line driveway around the lake is the white ribbon-like marking.

Top, right—Center street as seen from the east. In the exact center of the picture is the intersection of Center and Walnut streets.

Center—Highway junction from the southwest. The grove of trees marks the two city parks. Roofs of the Dobyys Lumber Co. and Griggs-Farley garage are plainly seen in center of picture.

Lower left—Center street from the south.

Lower right—C. B. & Q. railroad and Highway 36 from east edge of town.

Shelbina Business District



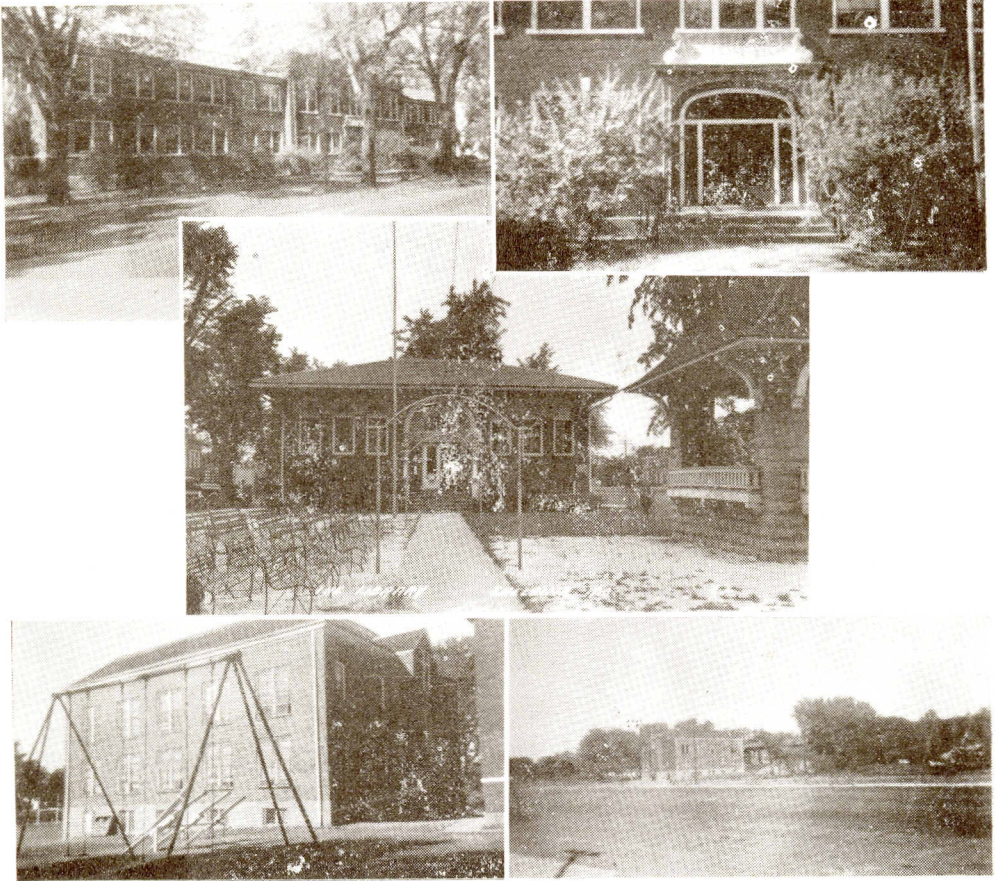
Top left—Chestnut street from Friendly Tavern to Waverly Hotel.
Top right—Chestnut street showing Shelbina Manufacturing Co. and Community Sale Barn.
Center—Center street looking north from in front of Kroger Store.
Lower left—South side of Walnut street looking east.
Lower right—Highway 36 from intersection looking west.

Shelbina Business District



Top left—The Municipal Power plant.
Top right—Producers Produce Co.
Center—The two Burlington depots, passenger and freight.
Lower left—Walnut street looking west from in front of the telephone building, which is not shown.
Lower right—Walnut street looking west from intersection of Center street.

Shelbina Educational Institutions



Upper left—High school building.
Upper right—Main entrance to high school building.
Center—The Public Library.
Lower left—Grade school building.
Lower right—Football field with grade school building in background.

Public Library:

The Public Library in Shelbina is located in the heart of the business section. It was established by a Carnegie grant in 1917 and opened for use the following year. It has a book collection of 8500 books and regularly subscribes to 48 magazines and newspapers. The annual circulation is approximately 45,000 and there are 2289 borrowers, of which 894 are rural and 492 children. The building is a brick structure consisting of two floors, the lower floor housing the Red Cross and many community affairs.

Health:

The general health condition in our community is considered good. We have had no severe epidemic in recent years. We have an annual examination in our Public Schools awarding nine point pins to those that attain this honor.

Shelbina Churches:

First Baptist Church, Christian Church, Methodist Church, Assembly of God Church, Catholic Church. Colored Churches: Baptist, Methodist.

Shelbina is very proud of all its churches, which are very active in the Christian work of the community.

Lodges-Fraternal Organizations:

A. F. & A. M., Royal Arch Masons, O. E. S., I. O. O. F., Rebekah, K of C.

The above orders are very active.

Clubs:

Shelbina Business Men's Club, Womans Club, P. E. O., I I O O F F Club, Home Economics Club, Missouri Farmers Association Clubs, Shelbina and Graham, J. F. A. Club (Junior Farmers Association.)

Other Organizations:

Boy Scouts, Cub Scouts, OAHAHA Camp Fire Girls, Blue Birds. American Legion, Teachenor Post No. 376. The American Legion Hall and Club Rooms conveniently located, welcome all service and ex-service men of World War I and II, D. H. I. (Dairy Herd Improvement Association.)

Hospital:

Thompson-Thurman Hospital located in south part of Shelbina. It is a brick building consisting of nine rooms, also operating room, x-ray room, nursery room, sterilizing room and office. Capacity 14 beds. Nurses work in three eight hour shifts daily. The office has recently been furnished with new equipment. Dr. W. L. Thurman and Dr. Lee Thompson in charge.

Shelbina Financial Institutions:

Shelbina Bank is one of the leading banks in this part of the state. Following is the report of condition of this bank at the close of business on December 31, 1946.

ASSETS

Cash, balances with other banks, including reserve balances, and cash items in process of collection	\$1,092,896.71
U. S. Government obligations, direct and guaranteed	1,744,275.53
Obligations of states and political subdivision	4,850.00
Loans and discounts (including \$741.75 overdrafts)	426,074.86
Bank premises owned \$3,975.00 furniture and fixtures none	3,975.00
Total Assets	\$3,272,072.10

LIABILITIES

Demand deposits of individuals, partnership and corporations	\$2,595,114.88
Time deposits of individuals, partnerships, and corporations	287,920.99
Deposits of U. S. Government (including postal savings)	79,260.43
Deposits of states and political subdivisions	92,216.81
Other deposits (certified and officers' checks, etc.)	100.00
Total Deposits	\$3,054,613.11
Total Liabilities	\$3,054,613.11

CAPITAL ACCOUNTS

Capital (Common stock with total par value)	\$ 50,000.00
Surplus	50,000.00
Undivided profits	117,458.99
Total Capital Accounts	\$217,458.99

TOTAL LIABILITIES & CAPITAL ACCOUNTS\$3,272,072.10

Shelbina Building & Loan Association:

Shelbina Building & Loan, an institution that has been very valuable to our community. Annual report at close of Fiscal Year, Dec. 31, 1946.

ASSETS

First mortgage direct reduction loans	\$56,545.12
Loans secured by shares of this association	100.00
Cash on hand and in banks	790.47
Total Assets	\$57,435.59

CAPITAL & LIABILITIES

Installment share dues credited deduct-delinquent dues (if carried)	\$ 8,077.93
Full-paid shares	41,850.00
Borrowed money (a) from banks and other associations	1,350.00
Advance payments by borrowers for taxes and insurance (if carried separately)	17.91
For contingencies	2,535.08
Undivided profits	3,640.67

Total Liabilities

\$57,435.59

Hannibal Production Credit Association—Loans on livestock, grain, farm personal property. Hurley Drennan, Mgr., Shelbina Office.
 N. F. L. A. (National Farm Loan Association)—Farm Loans, G. O. Tannehill, agent.
 Prudential Life Insurance Co.—Mortgage loans, Ed Rutter, agent.

Transportation:

Burlington Railroad.

Passenger service—Four trains daily, Chicago and St. Louis—Kansas City and Northwest.

Freight service—Twelve trains scheduled daily.

Tonnage received (1945 ending Sept. 30th.)—43,098,204 lbs.

Tonnage shipped (1945 ending Sept. 30th.)—18,985,905 lbs.

Empty car supply—Sufficient in normal times. One LCL freight train each way daily.

Siding capacity team tracks—45 cars.

Freight rates per cwt.	1st Class	2nd Class	3rd Class	4th Class
Chicago	\$1.39	\$1.18	\$.97	\$.71
St. Louis	.86	.73	.60	.48
Kansas City	.94	.79	.66	.52
New York	2.58	2.19	1.81	1.42
Boston	2.70	2.29	1.89	1.48

Express service—Pick-up and delivery service.

Rate to principal cities:

	1st class	2nd class
Kansas City	\$1.91	\$1.44
St. Louis	1.91	1.44
Chicago	3.01	2.34
New York	5.32	3.99
Boston	5.76	4.34

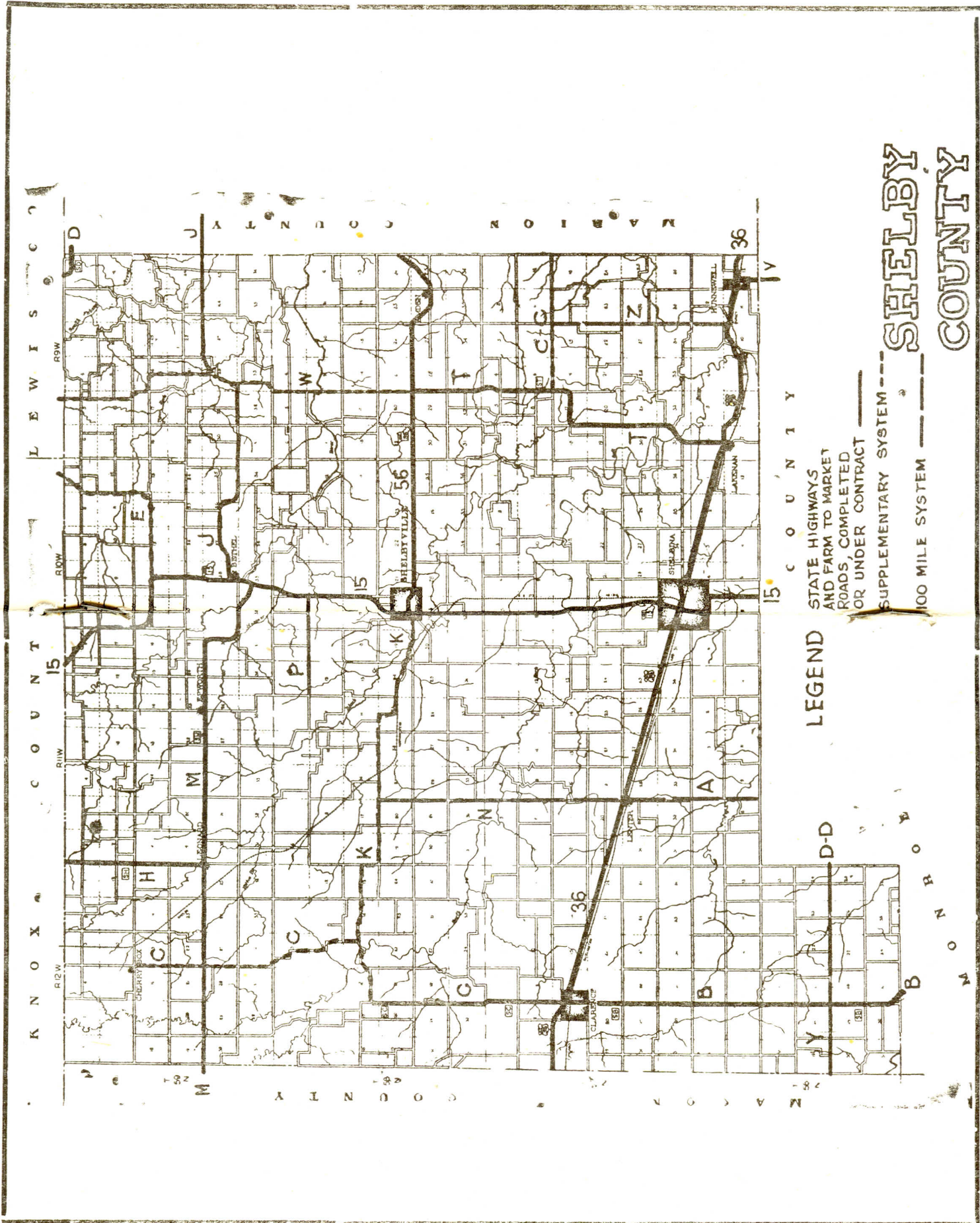
Special rates on poultry and eggs:

St. Louis and Kansas City 86c

Chicago \$1.77

Air express service at standard air rates. Delivery to New York made the following day via Air Express.

Map showing location of Shelbina, U. S. Highway No. 36, State Highway No. 15 also Farm-To-Market roads leading to Sheibina.



C O U N T Y
LEGEND
STATE HIGHWAYS
AND FARM TO MARKET
ROADS, COMPLETED
OR UNDER CONTRACT
SUPPLEMENTARY SYSTEM
100 MILE SYSTEM

SHELBY COUNTY

Five busses daily eastbound on U. S. Highway No. 36 Kansas City-Chicago.

Four busses daily westbound on U. S. Highway No. 36 Chicago-Kansas City.

Two busses south on state highway No. 15, connecting with passenger service to St. Louis, Springfield, Missouri and Kansas City, Missouri. Also two busses northbound, service extends to Shelbyville, Missouri, county seat of Shelby county.

Post Office:

Shelbina has a second class post office, which makes two daily deliveries, one in A. M., and one in P. M. Also makes two deliveries of packages one delivery in A. M. and one in P. M.

Taxation:

Shelbina City Tax	50c
State Tax	09c
County Tax	47c
Special Road & Bond Tax	25c
Road & Bond Tax	03c
School Tax	\$1.35
<hr/>	
Total Tax per \$100	\$2.69

City Light, Power & Water Rates:

Residential Rate		
Block	Usage	Rate
(1)	First 15 KWH	7c
(2)	Next 15 KWH	6c
(3)	Next 50 KWH	4c
(4)	Next 100 KWH	3c
(5)	Balance	2½c

Commercial Rate Usage		
Block	Usage	Rate
(1)	First 50 KWH	7c
(2)	Next 250 KWH	5c
(3)	Next 700 KWH	4c
(4)	Next 100 KWH	3c
(5)	Over 2000 KWH	2½c
	Minimum charge per month	75c

Industrial Large Power Rates		
Block	Usage	Rate
(1)	First 100 KWH	5c
(2)	Next 400 KWH	4c
(3)	Next 1500 KWH	3c
(4)	Next 3000 KWH	2½c
(5)	Over 5000 KWH	2c

Industrial Primary Power

Block	Usage	Rate
(1)	First 20,000 KWH	2.2 c
(2)	Next 30,000 KWH	1.95c
(3)	Next 50,000 KWH	1.5 c
(4)	Over 100,000 KWH	1.25c

City Water Rates:

First 5000 gallons	@ .40 per M
Next 5000 gallons	@ .35 per M
Next 15,000 gallons	@ .30 per M
Balance	@ .15 per M

Shelbina Insurance Rates:

Shelbina is an 8th Class Town. Annual rates per 100—

Dwelling (one family) brick improved roof	22c
Contents	26c
Wood shingle roof	30c
Contents	34c
Dwelling (one family) wood frame—improved roof	36c
Contents.....	40c
Wood shingle roof	42c
Contents.....	46c

Business Section Average Rates—90c to \$1.50.

City Bonded Indebtedness.—\$90,000.00 voted in special election held in November 1946. The amount to be used in building new sewage disposal plant.

City Assessed Valuation—\$1,259,000.00.

Fuel:

Coal is furnished by nearby coal mines 30 to 40 miles distance. Also shipped via freight from Illinois and other coal producing centers.

Bottle gas and fuel oil is furnished by local dealers.

Shelbina Climate:

The main factor controlling the climate of the northern region of Missouri is latitude. Because of its inland location, northern Missouri, as well as the entire state, has a climate essentially continental. While extremes of heat and cold and drought are marked in some years, they are not so pronounced as in the more northerly states. There never has been a total failure of any of the various crops grown in this section, precipitation is uniformly distributed geographically; and the seasonal distribution is favorable for the agriculturist, being heaviest in spring and summer and lightest in late autumn and winter. May is the wettest month and December and January are the months of least precipitation.

TEMPERATURE

Monthly average	Maximum	Minimum
Jan.	37 F	18 F
Feb.	40	19
Mar.	54	31
April	65	42
May	75	52
June	84	60
July	90	65
Aug.	88	64
Sept.	80	56
Oct.	67	44
Nov.	53	33
Dec.	38	21

Fall 63%

Summer 73%

Spring 61%

Winter 55%

Sunshine annual 64%

Average annual snowfall, 21 inches

Average annual rainfall, 36.51 inches.

Average late killing frost, October 16.

Average early killing frost, April 22.

178 days growing season.

Agriculture Census for Shelby County—1945:

Proportion in farms—	94.5
Number Farms—	1660.
Approximate land area—	321,280 acres.
Land in farms—	303,636 acres
Average size of farms—	182.9
Land used for crops—	122,900 acres
Land used for pasture—	151,940 acres
Land used for woodland—	31,794 acres
Value farm land and buildings—	\$10,684,547.00
Value farm implements and machinery—	1,088,631.00
Value dairy products sold—	174,385.00
Value poultry and poultry products—	577,243.00
Livestock and livestock products (other dairy and poultry) —	2,634,644.00
Crops —	970,453.00
Total sales of farm products --	\$4,356,725.00

Livestock Population:

Horses	5,100
Mules	800
All cattle	28,600
Milk cows	6,400
Hogs	46,100
Stock sheep	15,900
Chickens	231,100

Principal Crops:

Corn	45,710 acres—	1,329,867 bushels
Oats	21,600 acres—	409,200 bushels
Wheat	3,900 acres—	65,400 bushels
Soybeans	25,923 acres—	417,316 bushels
Hay clover and timothy—	15,300 acres	
Alfalfa	500 acres	
All other hay	22,700 acres	

Shelby County Budget Figures—1946:

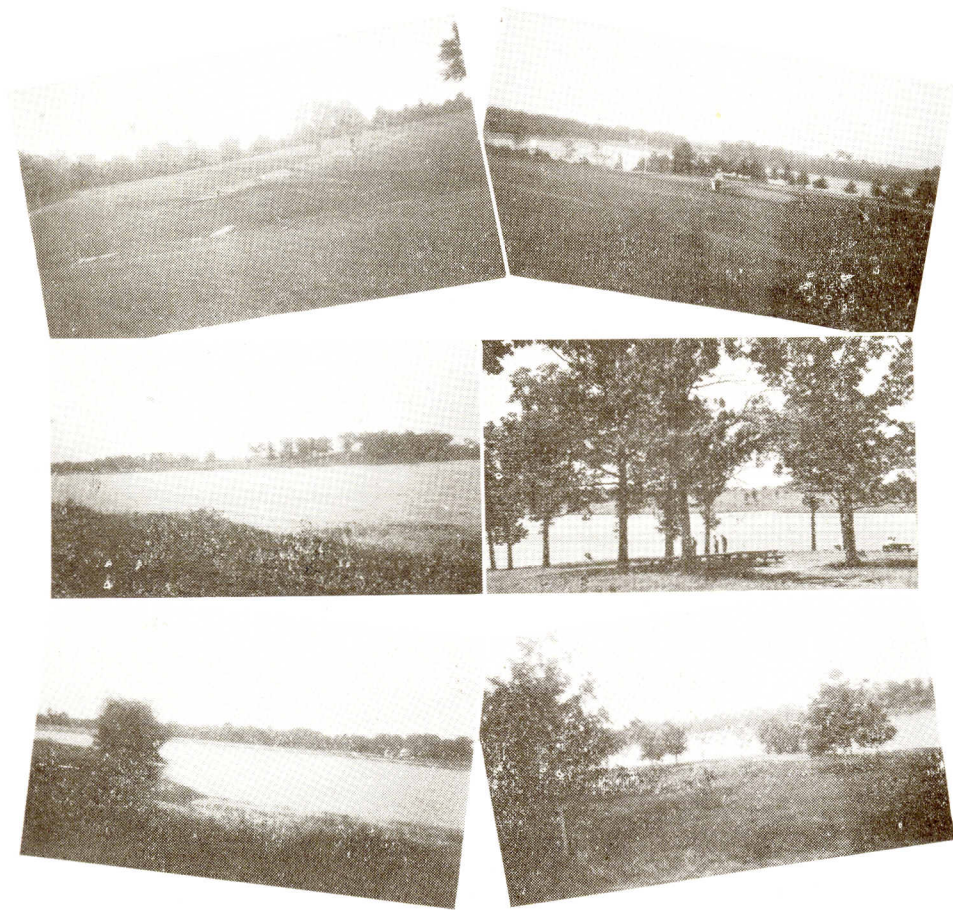
Population	11,224
Assessed Valuation	\$14,459,003.00
Unobligated surplus 1/1/46	81,964.00
Estimated surplus 12/31/46	82,054.00
Delinquent taxes	7,106.00
Estimated Receipts:	
Current Taxes:	
Real Estate	\$44,117
Personal	15,540
Railroad & Utilities	7,129
Merchants & Manufacturers	1,171
Total Est. Tax	\$67,957.00
Other Receipts:	
Service and sales	7,485.00
Grants in aid from state	400.00
Total est. current revenue	\$75,842.00
Less 10% delinquent taxes	7,584.00
	\$68,258.00
Estimated Expenditures:	
Care of Pauper and Insane	\$ 4,000.00
Jurors and elections	8,025.00
Salaries and office expenses	37,278.00
Contingent and emergencies	18,845.00
Total	\$68,168.00

Shelbina Churches



Upper left—Christian church.
Upper right—Catholic church.
Center—Assembly of God church.
Lower left—First Baptist church.
Lower right—Methodist church.

Recreational Area



The two top views are on the lake shore golf course.
Other scenes about the lake fill the remainder of the page.

In the Residential Section



The broad, shady streets, modern comfortable homes, make living in Shelbina a thing to be desired.

Classification of Business Concerns and Professions:

ABTRACTOR:

R. L. Thomas

AUTO SUPPLY:

J. Burdman Auto Parts

Gamble

AUCTIONEER:

Elmer Magruder

J. A. Magruder

BARBER SHOPS:

Garrison, Johns & Kunce

Loy Green

Mayfield & Ridgway

BLACKSMITH:

Lloyd Harrison

BOOK STORE:

Barker

BEAUTY SHOPS:

A & J

Drue's

Helen's

Vivian's

BULK OIL STATIONS:

Harold Parker—Cities Service

Cecil Cullers—Conoco

Grady Weaver D—X

R. J. Rogers—M. F. A.

Bill Nash—Mobilgas

Al Sharp—Phillips

Louis Hawkins—Shell

Cecil Buie—Sinclair

Colonel Johns—Standard Oil

CAFES:

City Cafe

Great Lakes Cafe

Maidrite — DeMoss & Erwin

Shelbina Cafe

Trailways Bus Cafe

(Community Sale) Cafe

CARPENTERS:

Jim Greening

Joe Lawton

Lloyd Patrick

Jesse Wood

CLEANERS:

Courtesy

COMMUNICATION:

Post Office

Western Light & Telephone Co., Inc.

Western Union

CONTRACTORS:

Ural Bower (plaster & masonry)

Walter Bragg (carpenter)

Clapper Bros. (carpenter)

Ernest Jewett (concrete & road)

Bill Moore (lime)

V. M. Threlkeld (lime)

Turner & Garrison (lime)

Carl Weaver (plaster & masonry)

DAIRIES:

Shelbina

Wm. McAllister

Tom O'Brien

Wilson Dairy

DENTISTS:

Dr. R. A. Bevan

Dr. J. A. Daniel

DEPARTMENT OR VARIETY:

Borden's

J. C. Maupin

DRUG STORES:

Maupin

Miles

DRY GOODS—CLOTHING:

R. C. Dickerson & Co., (Women's)

Helen's Style Shoppe (Women's)

C. H. Lasley Clothing Co., (Men)

Miles & Bates (Men & Women's)

Outlet (Men & Women's)

LAWYERS:

Fred C. Bollow
Lane B. Henderson
Judge Harry J. Libby

LIQUOR STORES

Gaines
Vaughts
Highway Liquor Store

LUMBER YARDS:

B. F. Dobyns
North Missouri

MACHINE SHOP:

T. W. Jackson

MARBLE WORKS:

Bedwell

MILLINERY:

Helen's Style Shoppe
Bess Pickett
Susie's Hat Shop

NEWSPAPER & PRINTING:

Shelbina Democrat

OPTOMETRIST:

Fred Krueger

PHOTOGRAPHY:

Stroud Studio

PHYSICIANS:

Dr. R. L. Caldwell
Dr. John Duncan
Dr. Vera Nicolaides
Dr. S. L. Simpson
Dr. W. L. Thurman
Dr. Lee Thompson

PRODUCE:

Farmers Produce Co.
Henderson Produce Co.
Moon Produce Co.
Producers Produce Co.

REAL ESTATE

Harry Douglass
Fred Krueger
C. E. McCaskey
R. L. Thomas

REPAIRS & PLUMBING:

Walt Baker Garage
Walter Ide (Electric Shop)
Clyde Studer (equipment)
State Highway Garage
Floyd Thomas

SALES ASSOCIATION:

Community sales

SEED CORN:

A. T. Buckman
Farmers Produce Co.
Henderson Produce Co.
Moon Produce Co.
Temple Stephens Co.

SERVICE STATIONS:

John Gerlich—Cities Service
Baymiller—Veterans Cities Service
Stanley Mefford—Conoco
Trotter Motor Co.—Conoco
Roe Harrison—D-X
Weaver Service—D-X
Woodie Draughn—Imperial
Bill Faulk—Imperial
Guymon Hatcher—M. F. A.
Virgil Johns—Mobilgas
Gilberts—Phillips 66
Great Lakes Service Sta.—Phillips 66
Roy Strachan—Shell
Oscar Olbert—Sinclair
Claggett & Starmer—Standard

SHOE REPAIR:

Hubble's Shoe Shop
Shelbina Shoe Shop

TAVERNS & LUNCH ROOMS

Friendly Tavern
Hamilton's
Harry & Grace

TIN SHOP:

Brehm's

EDUCATIONAL

Gertrude Dobyns Studio
Three Public Schools
Public Library

ELECTRIC APPLIANCES:

Connely
W. S. Logan
Lucas
Parsons
Westlake

ENTERTAINMENT:

Bowling Alley
Clark Theatre
Welker Pool Hall

FACTORIES:

Shelbina Manufacturing Company
Municipal Light & Water Plant
Missouri Ice Company
Holdsworth Broom Factory
Homan Pottery
Joe Atterberry, Potato Chip
Factory & Bakery
H. L. McElhoe Machine Works
Todd Saw Mill

FARM IMPLEMENTS:

Paul Buckman (Fordson)
Copeland (I. H. C.)
Marvin Jones (M. M.)
W. S. Logan (Allis-Chalmers)
Shelby County Implement Co.
(John Deere)
Walker Motor Co., (Case)

FINANCE:

Shelbina Bank
Shelbina Bldg. & Loan Ass'n.
Hannibal Production Credit Ass'n.
National Farm Loan Ass'n.

G. O. Tannehill, Agent
Prudential Life Insurance Co.,
Mortgage Loans. Ed Rutter, Agent

FOOD STORES:

Adams Grocery
Jim Cadwell
Gaines Grocery
Farmers Produce Co.
Kiefer
Kroger
Moon Produce Co.
Temple Stephens
Threlkelds

FROZEN FOOD LOCKERS:

S. S. Barkelew Frozen Food Lockers

FUNERAL HOMES:

Hayes
Million & Barkelew

FURNITURE:

Hayes
Miller

GARAGES & AUTOMOBILE

AGENCIES:

Cliff Cadwell Garage
Griggs-Farley (Chevrolet Agency)
Healds Garage
W. S. Logan (Pontiac-GMC)
Macs Garage
Oliver Garage
Todds Garage
Trotter Motor Co. (Ford Agency)
Walker Motor Co. (Plymouth-DeSoto)

HARDWARE:

Lucas
Westlake

HARNESS:

Joe Maupin

HOSPITAL:

Thurman-Thompson Hospital

INSURANCE AGENCIES:

Austin Claggett
Bob Collins
Farmers Mutual
David A. Hawkins Agency
Harry J. Libby, Jr.
L. L. Ligon
M. F. A. Mutual Insurance Co.
Jim Schulz
Dan Turney

JEWELERS:

J. T. Doyle
Huckabey

TOURIST HOME:

Mrs. Austin Claggett

TRANSPORTATION:

Frank Adams—Dray
Burlington R. R. Co.
Express Co.
Vivien Fox—Taxi
Santa Fe Trailways Bus
Veterans — Taxi

VETERINARY:

Dr. R. P. Poage

OTHERS:

Curtiss Candy Co.
Tom O'Brien (pop corn)
Charles Crawford (pop corn)
Hydro Gas Co.
Gilbert Maschman,
Conservation Officer
Weaver Grocery Truck
Tonkinson

HOTEL

Waverly Hotel conveniently located. A three story brick building. It has twenty-six sleeping rooms. Six rooms with bath. All the rooms have running water and most all beds have inner spring mattresses. The hotel is known for its good meals and fine service.

THEATRE

The Clark Theatre was erected in 1935, at a cost of \$26,000 exclusive of equipment. It is air conditioned, seats something over 600 people. The Clark is being redecorated and improved this year with an expenditure of some \$7,000 to \$10,000 for new equipment and decorations.

PRODUCERS PRODUCE CO.

Co-operative Marketing (Missouri Farmers Association), poultry and egg processing plant, wholesale distributors of fancy packs of dressed poultry, shell eggs and frozen eggs. Wholesale dealer in wool and hides. Also distributors of wire, and other steel products, composition roofing, paints, feeds and other merchandise. The above farm produce is purchased and the merchandise distributed in North Missouri in a radius of 75 to 100 miles. The plant deals with about 80 Cooperative Exchanges (buying stations) throughout the trade territory. Annual sales approximate five million dollars. Approximate annual payroll \$225,000.00.

MISSOURI ICE PLANT

Employs on an average seven persons, at times more and at other times less due to seasonal demand. The only ice plant in the County. Produces approximately 3,500 tons of ice per year. Furnishes ice for railroad cars and transport trucks.

SHELBINA HATCHERY

Shelbina Hatchery, Browne Moore, owner and operator, capacity 100,000 chickens, yearly production 300,000 chicks. Pays \$10,000 above market price for eggs yearly. Hires three full time employees and three to four during hatching season. Hatchery is U. S. Approved, and U. S. Pulorum controlled. It has all new equipment.

SHELBINA MANUFACTURING CO.

The Shelbina Manufacturing Company, a war born enterprise is primarily engaged in making 4-wheel trailer wagons, producing three a day. The company also makes rotary scrapers, custom built trailers, auto wreckers and changes steel wheel implements to rubber mounting.

Lee Staggs is owner of the company. He has bought eight large lots at the east edge of Shelbina on both Highway 36 and the Burlington R. R., with the expectation of erecting a factory.

The company has been handicapped by material shortage which drastically limits its production so that only five men are employed in addition to the owner. It does only a wholesale business with its market mostly in Iowa, Illinois, Kansas and Missouri.

SHELBINA POTTERY PLANT

Early in the fall of 1946 B. I. Day started production in his newly erected pottery plant at the east edge of Shelbina. He was handicapped by inability to obtain equipment needed and through the winter used a single 8-hour shift, six days a week, employing five men besides himself. Production was limited to flower pots with an average of 5,000 per day.

Recently the Pottery Plant was sold by Mr. Day to Harold Homan, who is changing the equipment from that used for making flower pots, to some suitable for the manufacture of bathroom equipment. At the time this is written the changeover has not been completed.

Clay for the making of flower pots was mined at Lakenan, six miles to the east. Clay for the new product will come from a Southern state until experiments prove it can be used satisfactorily from mines closer to Shelbina.

Mr. Homan has several years experience in the business of manufacturing sanitary supplies such as he is planning for the local plant.

FARMERS PRODUCE CO.

(Cooperative—M. F. A.) buyers of poultry, eggs, wool, hides, grains and feeds. Also retails groceries, feeds, coal and other merchandise. Feeding grinding service.

THE SHELBINA DEMOCRAT

Shelbina has one newspaper, The Democrat, with a circulation of 2,200. More than 1,000 people with a Shelbina address are subscribers while 1,600 Shelby Countians are on the list. Adjoining counties, within Shelbina's trade territory, take up most of the remaining circulation. Five people are regularly employed, six when available.

H. L. McELHOE MACHINE WORKS

The H. L. McElhoe Machine Works located at the west end of Shelbina, manufactures heavy machinery for road building and quarry work.

SHELBY LAKE PARK

Shelby has a city lake park, a total area of 260 acres. The lake covers approximately 60 acres, which furnishes the city water supply. The lake is also used for fishing and boating. There are a number of shelter houses and furnaces conveniently located near the lake. A nine hole Golf Course is located to the west and south end of the lake. The drive from No. 6 green extends across the end of the lake. Hard surface roads make it accessible by automobile to the remote parts of the park.

HENDERSON PRODUCE CO.

Branch House, Buyers of poultry, eggs, wool, hides and furs. Retailer feeds and other merchandise.

SHELBY COUNTY FAIR

Shelby also has a County Fair Grounds located at the north edge of town on Highway No. 15. It has a 1/2 mile race track and Amphitheatre with seating capacity of about 4,000.

An annual fair is held each year, bringing show horses, race horses and other show stock and agriculture products from miles around.

BROADACRES SADDLE HORSE FARM

Broadacres Saddle Horse Farm located one mile south of Shelby, Welch Greenwell owner and manager. The farm is nationally known for fine saddle horses. Horses from all over the nation are sent to this farm to be trained. Two saddle horses, trained by Broadacres and ridden by its owner, have won national championships—Easter Serenade and The Invasion.

HUNTING AND FISHING

Few if any places in Missouri can equal Shelby and Monroe counties for quail hunting. Their fine streams are kept well stocked with fish by State Conservation Commission. Fox and coon hunters will also find the best of sport here.

IN CONCLUSION

Shelby must be an ideal town in which to live and make a living. Nearly 80 per cent of the business and professional firms have for owner or operator a citizen who has moved to Shelby from some other community. The actual figures for the two business blocks on Center Street are nine native citizens and thirty-three who have adopted Shelby for their home.

The city is known far and wide for the hospitality it shows newcomers, for the amazing lack of business failures, for its numerous building sites, but lack of available housing. A glance at the regular statement made by the Shelby Bank will show the town to be most prosperous.